

APARTMENT BUILDING

FIRSHY

MARKBODUR TOWERS CONDOMINIUM
 MARKBODUR TOWERS FOR INCORPORATED

FOR MYERS

FORRIDA

I N D E X	
2	PLOT & GROUND FLOOR PLAN
AP-112	PLUMBING PLAN & STRUCTURAL FRAMING & DETAILS
3	TYPICAL FLOOR PLANS, SCHEDULES & ROOF PLAN
4	LARGE SCALE FLOOR PLAN 7 TH & 8 TH FLOOR
5	LARGE SCALE FLOOR PLAN 2 ND THRU 6 TH FLOORS
6	ELEVATIONS
7	ELECTRICAL PLAN & SCHEDULES
8	ELECTRICAL PANEL LAYOUT & DETAILS

D R A W I N G S	
9	ELECTRICAL APPENDA.
10	PLUMBING PLAN-ROOF PLAN & RISER DIAGRAMS
11	PLUMBING GROUND & PLOT PLANS
12	PLUMBING HALF FLOOR PLAN & DETAILS
13	PLUMBING APPENDA
14	AIR COND. H. & V. 2 ND THRU 6 TH FLOORS
16	AIR COND. H. & V. 7 TH & 8 TH FLOOR
AP-12	PLUMBING PLAN & STRUCTURAL FRAMING & DETAILS
AP-3	REVISED CONSTRUCTION DETAILS
AP-4	REVISED CONSTRUCTION DETAILS
AP-5	REVISED CONSTRUCTION DETAILS

R. H. MATTS & ASSOCIATES - REGISTERED ARCHITECT

FORT MYERS, FLORIDA

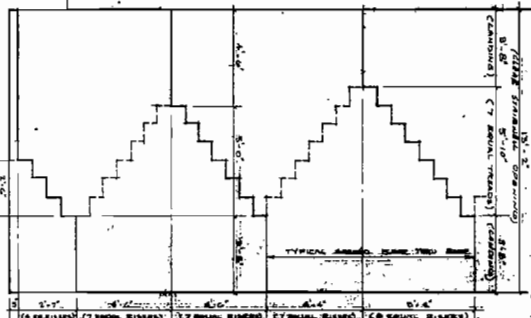
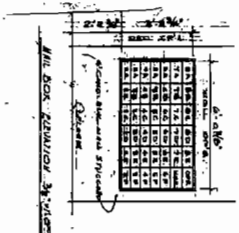
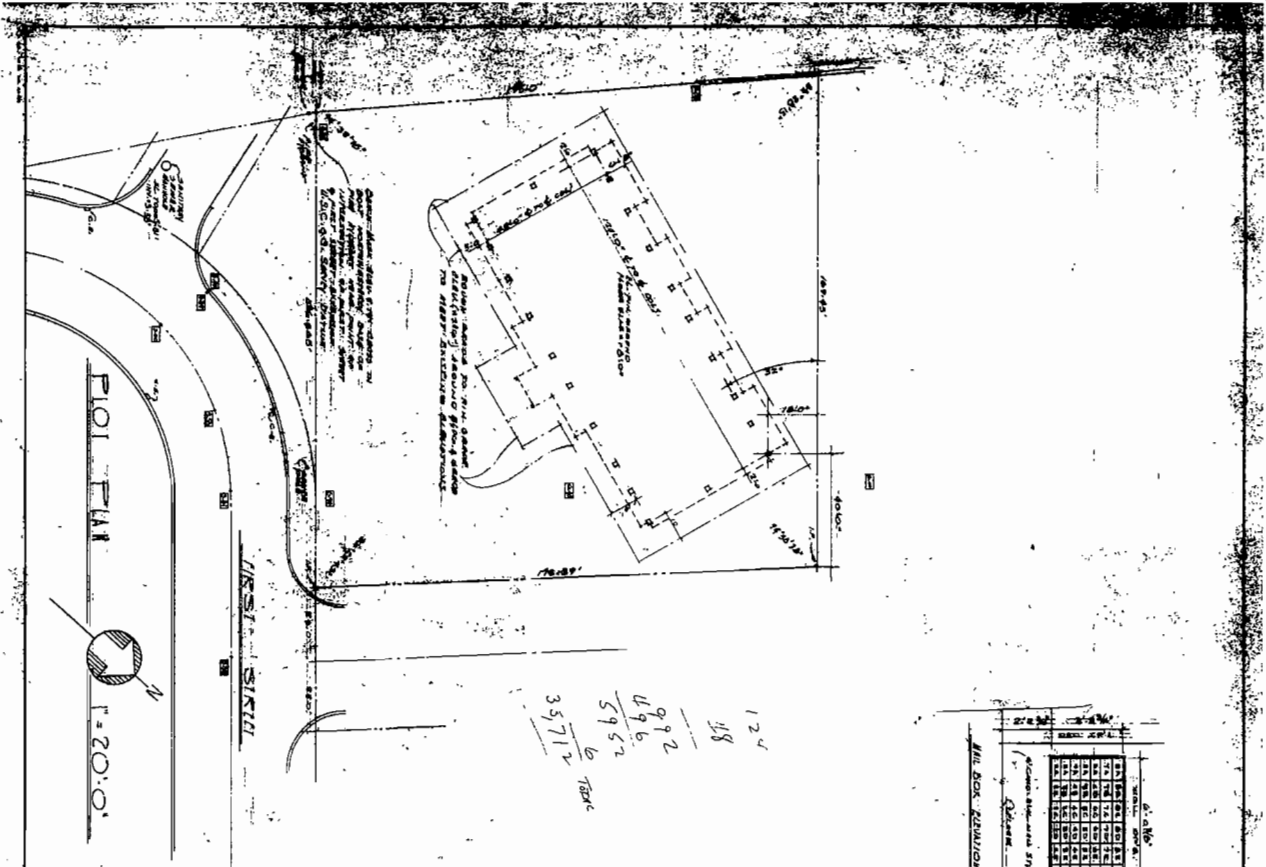
HECTOR F. J. ESTRUP - STRUCTURAL ENGINEER

CLARENCE L. KIMBALL - ELECTRICAL ENGINEER

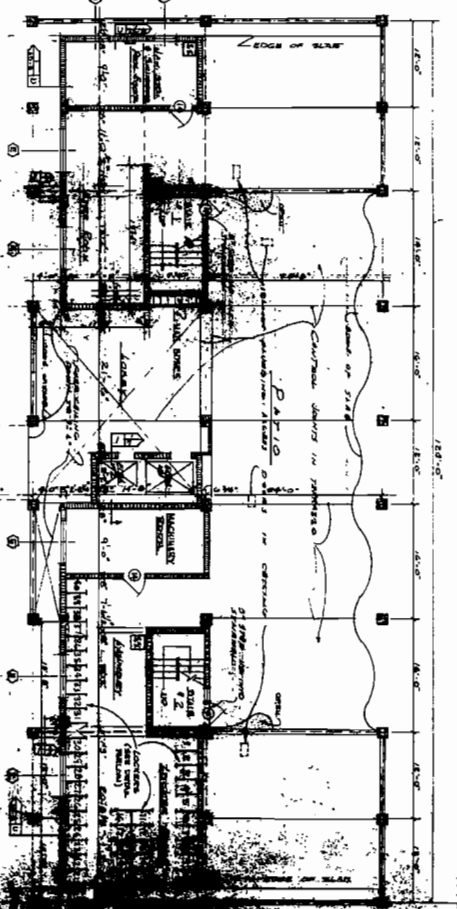
APPROVED
 DATE 2-19-63
 CITY OF FORT MYERS
 & B. CHAMBERLAIN

SET NO 6
 DATE: SEPT. 25, 63
 REV. DATE: DEC. 19, 63
 REV. DATE: FEB. 4, 64

SHEET NO. 1



ROUND TOWER PLAN



THE SHIRAZI TRAD & CASE DESIGN

1. APPROXIMATE 20'-0" x 20'-0" x 20'-0"

2. APPROXIMATE 20'-0" x 20'-0" x 20'-0"

3. APPROXIMATE 20'-0" x 20'-0" x 20'-0"



NO.	DATE	REVISION
1		
2		
3		
4		
5		
6		
7		
8		
9		
10		
11		
12		
13		
14		
15		
16		
17		
18		
19		
20		
21		
22		
23		
24		
25		
26		
27		
28		
29		
30		
31		
32		
33		
34		
35		
36		
37		
38		
39		
40		
41		
42		
43		
44		
45		
46		
47		
48		
49		
50		

LIST OF SYMBOLS

1. APPROXIMATE 20'-0" x 20'-0" x 20'-0"

2. APPROXIMATE 20'-0" x 20'-0" x 20'-0"

3. APPROXIMATE 20'-0" x 20'-0" x 20'-0"

4. APPROXIMATE 20'-0" x 20'-0" x 20'-0"

5. APPROXIMATE 20'-0" x 20'-0" x 20'-0"

6. APPROXIMATE 20'-0" x 20'-0" x 20'-0"

7. APPROXIMATE 20'-0" x 20'-0" x 20'-0"

8. APPROXIMATE 20'-0" x 20'-0" x 20'-0"

9. APPROXIMATE 20'-0" x 20'-0" x 20'-0"

10. APPROXIMATE 20'-0" x 20'-0" x 20'-0"

11. APPROXIMATE 20'-0" x 20'-0" x 20'-0"

12. APPROXIMATE 20'-0" x 20'-0" x 20'-0"

13. APPROXIMATE 20'-0" x 20'-0" x 20'-0"

14. APPROXIMATE 20'-0" x 20'-0" x 20'-0"

15. APPROXIMATE 20'-0" x 20'-0" x 20'-0"

16. APPROXIMATE 20'-0" x 20'-0" x 20'-0"

17. APPROXIMATE 20'-0" x 20'-0" x 20'-0"

18. APPROXIMATE 20'-0" x 20'-0" x 20'-0"

19. APPROXIMATE 20'-0" x 20'-0" x 20'-0"

20. APPROXIMATE 20'-0" x 20'-0" x 20'-0"

21. APPROXIMATE 20'-0" x 20'-0" x 20'-0"

22. APPROXIMATE 20'-0" x 20'-0" x 20'-0"

23. APPROXIMATE 20'-0" x 20'-0" x 20'-0"

24. APPROXIMATE 20'-0" x 20'-0" x 20'-0"

25. APPROXIMATE 20'-0" x 20'-0" x 20'-0"

26. APPROXIMATE 20'-0" x 20'-0" x 20'-0"

27. APPROXIMATE 20'-0" x 20'-0" x 20'-0"

28. APPROXIMATE 20'-0" x 20'-0" x 20'-0"

29. APPROXIMATE 20'-0" x 20'-0" x 20'-0"

30. APPROXIMATE 20'-0" x 20'-0" x 20'-0"

31. APPROXIMATE 20'-0" x 20'-0" x 20'-0"

32. APPROXIMATE 20'-0" x 20'-0" x 20'-0"

33. APPROXIMATE 20'-0" x 20'-0" x 20'-0"

34. APPROXIMATE 20'-0" x 20'-0" x 20'-0"

35. APPROXIMATE 20'-0" x 20'-0" x 20'-0"

36. APPROXIMATE 20'-0" x 20'-0" x 20'-0"

37. APPROXIMATE 20'-0" x 20'-0" x 20'-0"

38. APPROXIMATE 20'-0" x 20'-0" x 20'-0"

39. APPROXIMATE 20'-0" x 20'-0" x 20'-0"

40. APPROXIMATE 20'-0" x 20'-0" x 20'-0"

41. APPROXIMATE 20'-0" x 20'-0" x 20'-0"

42. APPROXIMATE 20'-0" x 20'-0" x 20'-0"

43. APPROXIMATE 20'-0" x 20'-0" x 20'-0"

44. APPROXIMATE 20'-0" x 20'-0" x 20'-0"

45. APPROXIMATE 20'-0" x 20'-0" x 20'-0"

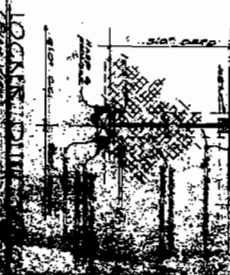
46. APPROXIMATE 20'-0" x 20'-0" x 20'-0"

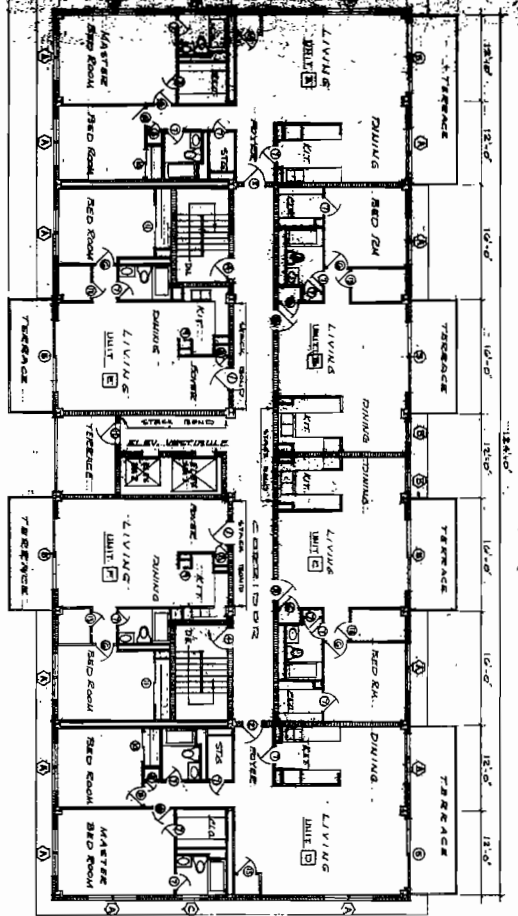
47. APPROXIMATE 20'-0" x 20'-0" x 20'-0"

48. APPROXIMATE 20'-0" x 20'-0" x 20'-0"

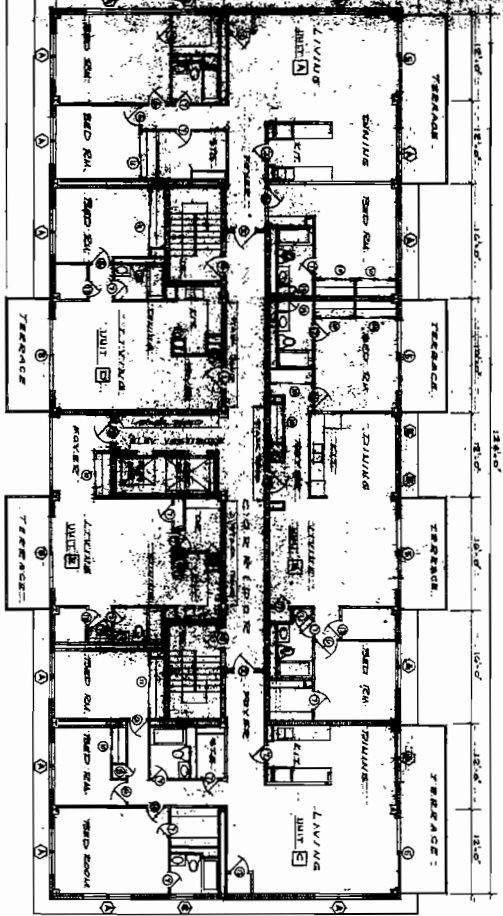
49. APPROXIMATE 20'-0" x 20'-0" x 20'-0"

50. APPROXIMATE 20'-0" x 20'-0" x 20'-0"





TYPICAL APARTMENT PLANS - SECOND THRU SIXTH FLOORS



TYPICAL APARTMENT PLANS - SEVENTH & EIGHTH FLOORS

LIST SCHEDULE

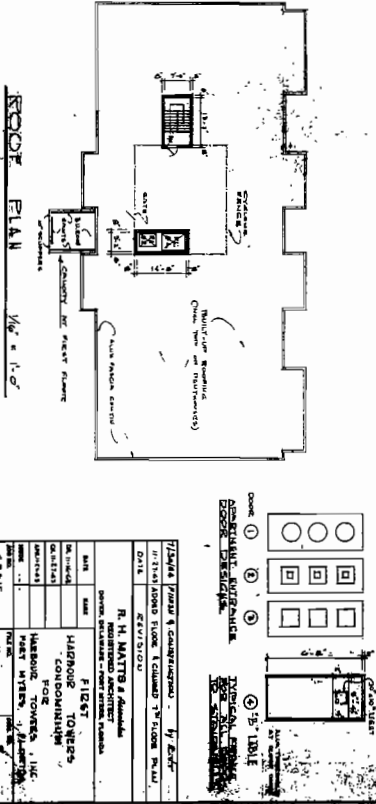
ROOM	FLOOR	WALLS	WALLCOAT	WALLS	CEILING	REMARKS
LOBBY	1ST	CONCRETE	PAINTED	CONCRETE	CONCRETE	
STAIRS	2ND	CONCRETE	PAINTED	CONCRETE	CONCRETE	
APARTMENT	2ND	CONCRETE	PAINTED	CONCRETE	CONCRETE	
APARTMENT	3RD	CONCRETE	PAINTED	CONCRETE	CONCRETE	
APARTMENT	4TH	CONCRETE	PAINTED	CONCRETE	CONCRETE	
APARTMENT	5TH	CONCRETE	PAINTED	CONCRETE	CONCRETE	
APARTMENT	6TH	CONCRETE	PAINTED	CONCRETE	CONCRETE	
APARTMENT	7TH	CONCRETE	PAINTED	CONCRETE	CONCRETE	
APARTMENT	8TH	CONCRETE	PAINTED	CONCRETE	CONCRETE	

WINDOW SCHEDULE

NAME	TYPE	HEIGHT	WIDTH	MATERIAL	GLASS	SCREEN	FRAME	REMARKS
W-1	DOUBLE	4'-0"	3'-0"	ALUM.	ONE CLEAR	ALUM.	ALUM.	SEE WINDOW SCHEDULE
W-2	DOUBLE	4'-0"	3'-0"	ALUM.	ONE CLEAR	ALUM.	ALUM.	SEE WINDOW SCHEDULE
W-3	DOUBLE	4'-0"	3'-0"	ALUM.	ONE CLEAR	ALUM.	ALUM.	SEE WINDOW SCHEDULE
W-4	DOUBLE	4'-0"	3'-0"	ALUM.	ONE CLEAR	ALUM.	ALUM.	SEE WINDOW SCHEDULE
W-5	DOUBLE	4'-0"	3'-0"	ALUM.	ONE CLEAR	ALUM.	ALUM.	SEE WINDOW SCHEDULE

DOOR SCHEDULE

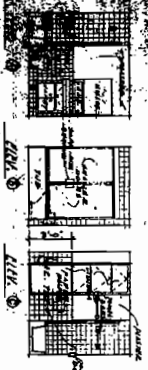
NAME	TYPE	HEIGHT	WIDTH	MATERIAL	FINISH	GLAZING	FRAME	REMARKS
D-1	DOUBLE	6'-8"	3'-0"	WOOD	PAINTED	WOOD	WOOD	SEE DOOR SCHEDULE
D-2	DOUBLE	6'-8"	3'-0"	WOOD	PAINTED	WOOD	WOOD	SEE DOOR SCHEDULE
D-3	DOUBLE	6'-8"	3'-0"	WOOD	PAINTED	WOOD	WOOD	SEE DOOR SCHEDULE
D-4	DOUBLE	6'-8"	3'-0"	WOOD	PAINTED	WOOD	WOOD	SEE DOOR SCHEDULE
D-5	DOUBLE	6'-8"	3'-0"	WOOD	PAINTED	WOOD	WOOD	SEE DOOR SCHEDULE



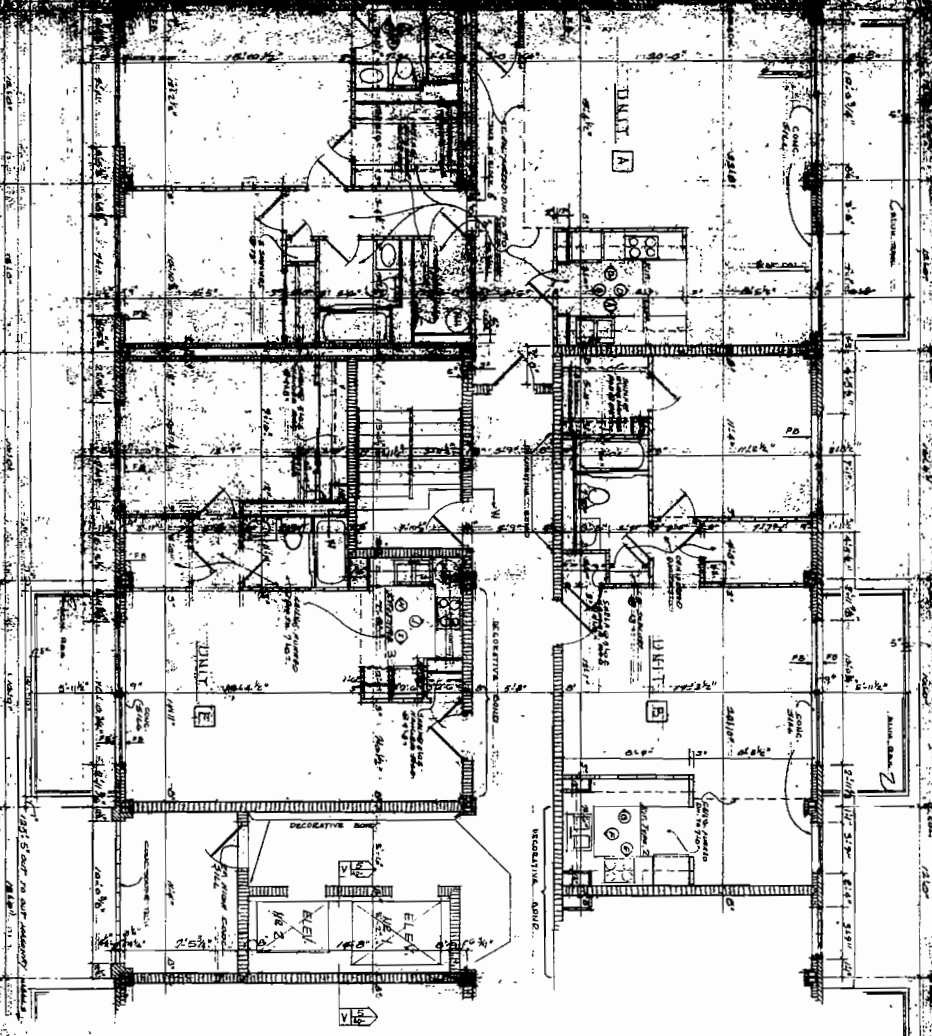
ROOF PLAN

DATE: 11-15-64
 DRAWN BY: J. H. MATTS & ASSOCIATES
 CHECKED BY: J. H. MATTS & ASSOCIATES
 PROJECT: HARBOR TOWERS CONDOMINIUM
 SHEET: HARBOR TOWERS CONDOMINIUM
 NO. 11-15-64

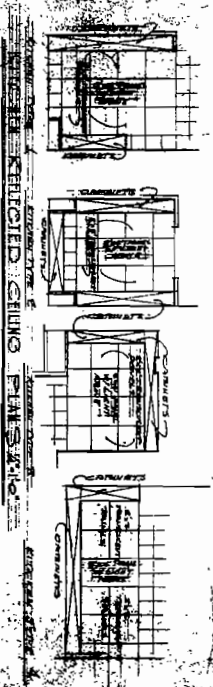
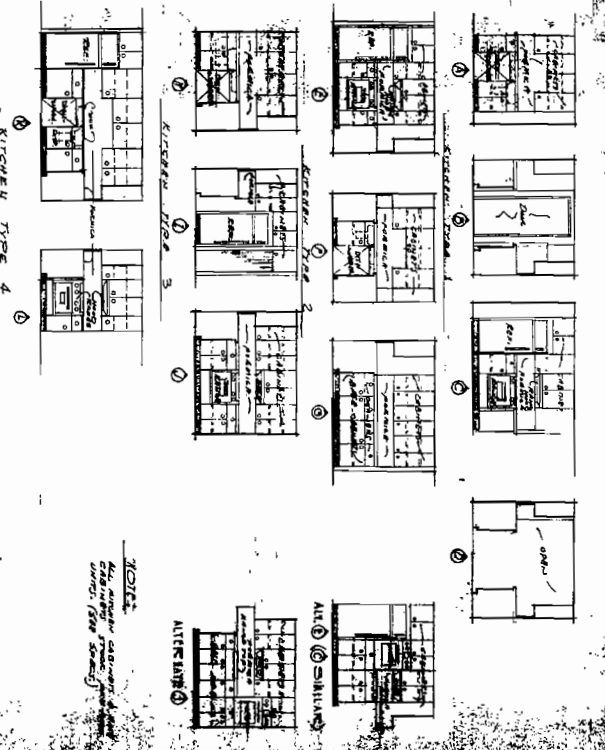
ST. L. PARKSON ELEV. 1/4" = 1'-0"



FLOOR PLAN (SECOND, THIRD, SIXTH FLOORS) 1/4" = 1'-0"

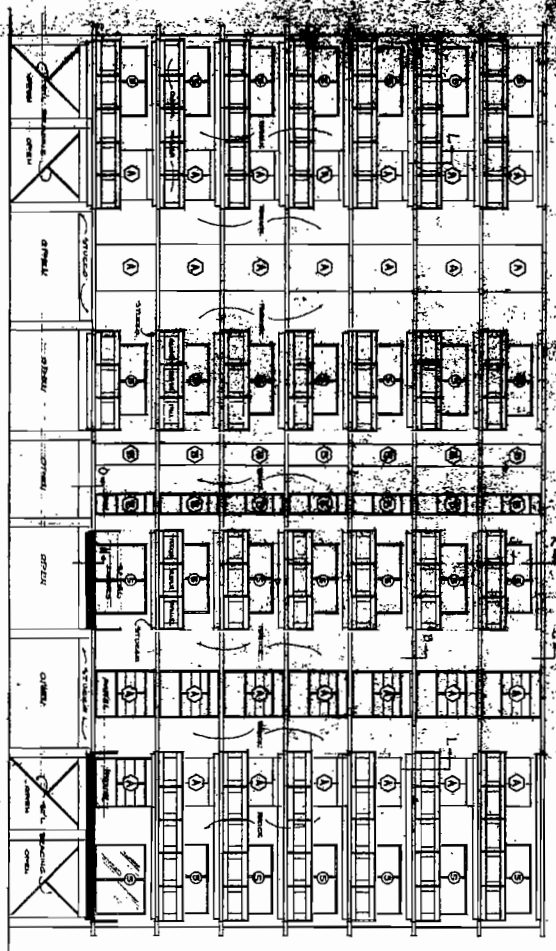


KITCHEN ELEVATIONS 1/4" = 1'-0"

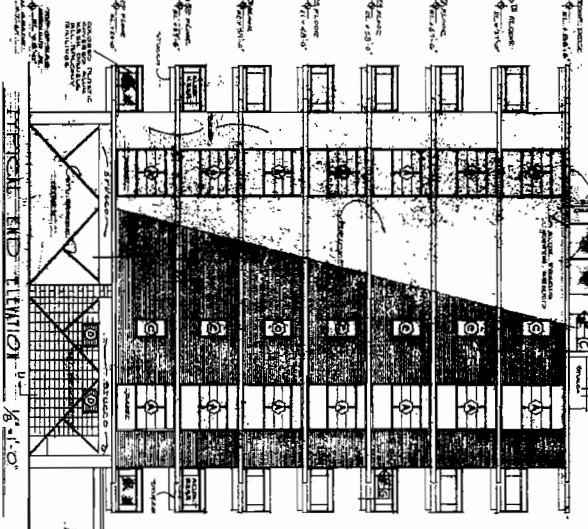
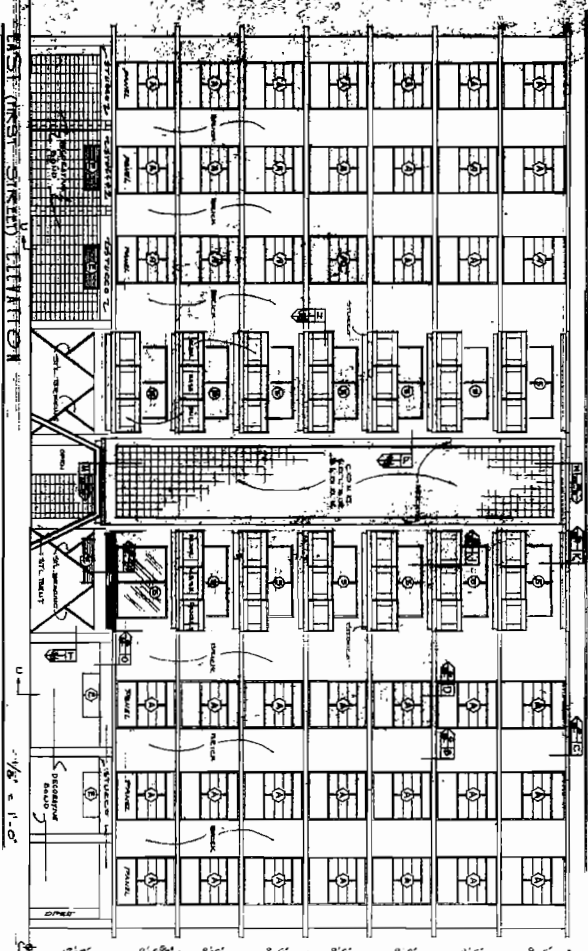


ITEM	DATE	DESCRIPTION
1		PRELIMINARY
2		REVISION
3		REVISION
4		REVISION
5		REVISION
6		REVISION
7		REVISION
8		REVISION
9		REVISION
10		REVISION
11		REVISION
12		REVISION
13		REVISION
14		REVISION
15		REVISION
16		REVISION
17		REVISION
18		REVISION
19		REVISION
20		REVISION
21		REVISION
22		REVISION
23		REVISION
24		REVISION
25		REVISION
26		REVISION
27		REVISION
28		REVISION
29		REVISION
30		REVISION
31		REVISION
32		REVISION
33		REVISION
34		REVISION
35		REVISION
36		REVISION
37		REVISION
38		REVISION
39		REVISION
40		REVISION
41		REVISION
42		REVISION
43		REVISION
44		REVISION
45		REVISION
46		REVISION
47		REVISION
48		REVISION
49		REVISION
50		REVISION
51		REVISION
52		REVISION
53		REVISION
54		REVISION
55		REVISION
56		REVISION
57		REVISION
58		REVISION
59		REVISION
60		REVISION
61		REVISION
62		REVISION
63		REVISION
64		REVISION
65		REVISION
66		REVISION
67		REVISION
68		REVISION
69		REVISION
70		REVISION
71		REVISION
72		REVISION
73		REVISION
74		REVISION
75		REVISION
76		REVISION
77		REVISION
78		REVISION
79		REVISION
80		REVISION
81		REVISION
82		REVISION
83		REVISION
84		REVISION
85		REVISION
86		REVISION
87		REVISION
88		REVISION
89		REVISION
90		REVISION
91		REVISION
92		REVISION
93		REVISION
94		REVISION
95		REVISION
96		REVISION
97		REVISION
98		REVISION
99		REVISION
100		REVISION

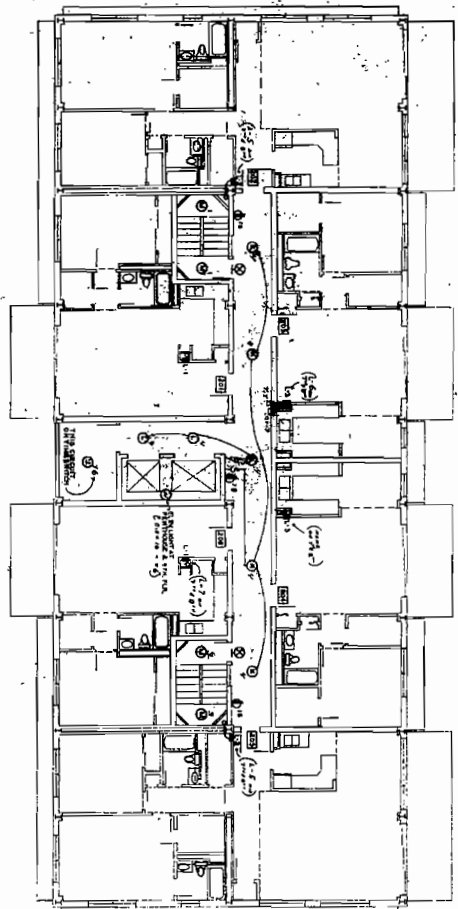
NOTE: ALL DIMENSIONS ARE IN FEET AND INCHES. DIMENSIONS IN PARENTHESES ARE IN FEET ONLY.



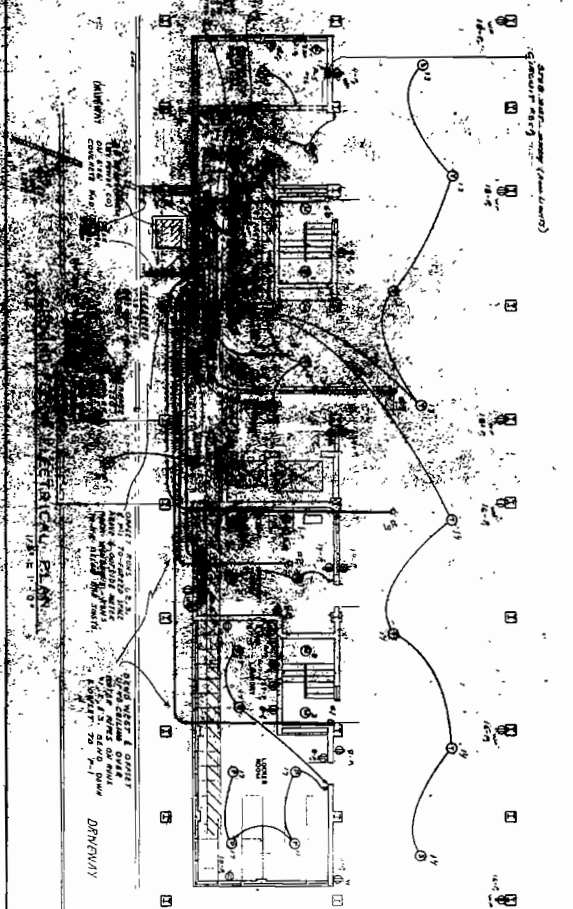
NOTE:
 1. SEE PLAN FOR WINDOW SIZES
 2. SEE PLAN FOR WINDOW SPACING
 3. SEE PLAN FOR WINDOW FINISHES
 4. SEE PLAN FOR WINDOW OPERATIONS
 5. SEE PLAN FOR WINDOW ACCESSORIES
 6. SEE PLAN FOR WINDOW DETAILS
 7. SEE PLAN FOR WINDOW COORDINATION



DATE	1/25/64	REVISION	1
BY	R. H. MATTHEWS	REVISION	2
CHECKED	R. H. MATTHEWS	REVISION	3
APPROVED	R. H. MATTHEWS	REVISION	4
SCALE	1/8" = 1'-0"	REVISION	5
PROJECT	WEST END ELEVATION	REVISION	6
CLIENT	WEST END ELEVATION	REVISION	7
ARCHITECT	R. H. MATTHEWS	REVISION	8
ENGINEER	R. H. MATTHEWS	REVISION	9
CONTRACTOR	R. H. MATTHEWS	REVISION	10



SECOND FLOOR ELECTRICAL PLAN
TYPICAL FLOOR PLAN 2ND THIRD BTH ROOM
SCALE 1/8" = 1'-0"

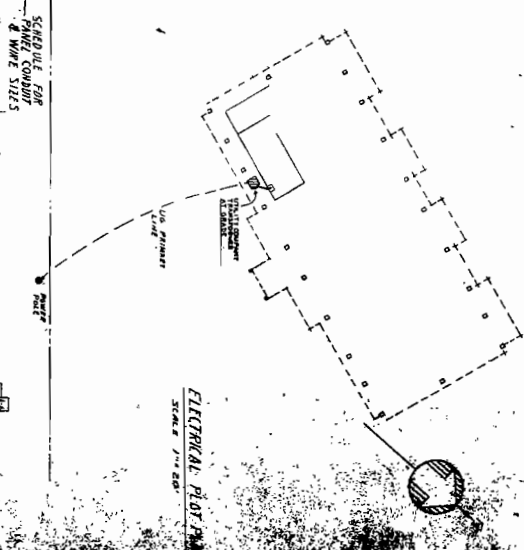


TYPICAL FLOOR PLAN
2ND 3RD BTH ROOM
SCALE 1/8" = 1'-0"

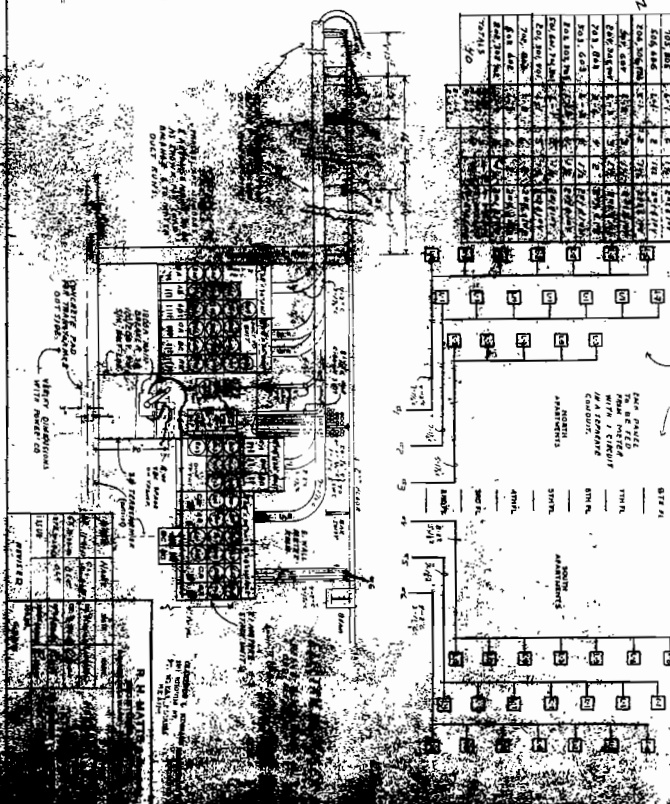
NOTE: AS SHOWN BY CONDUIT (CMT) FROM TYPICAL PLAN TO OTHER ROOMS, ALL WIRING TO BE RUN IN CONDUIT. 5 FEET - FLOOR TO FLOOR W/IN WALLS.

MISER. DIAGRAM FOR BATH, CABLEVISION & TELEPHONE.

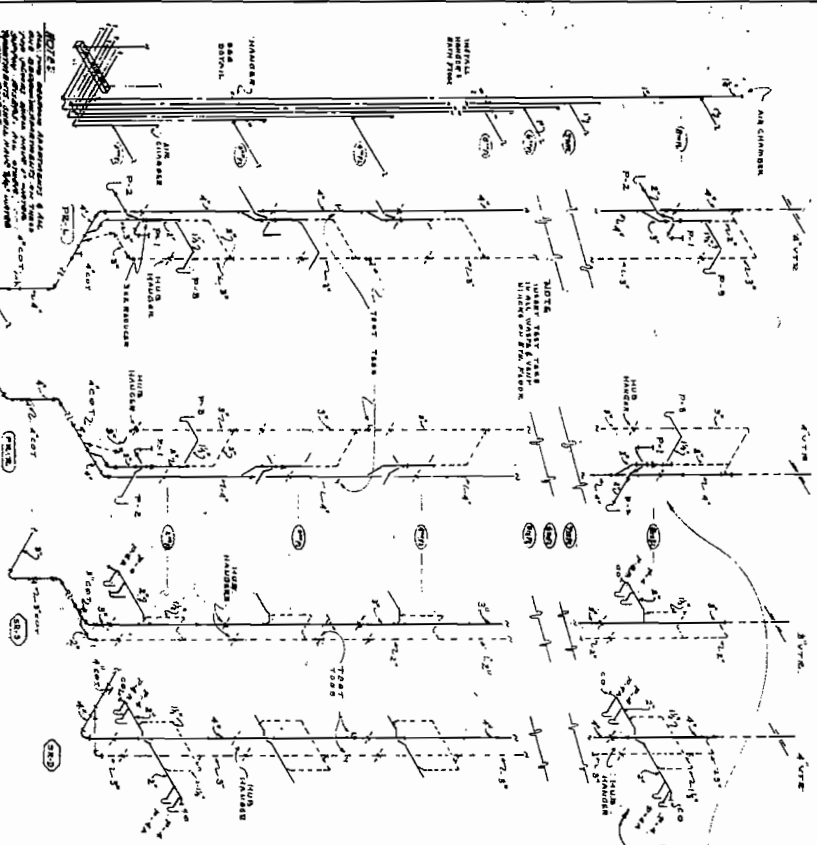
Room	Symbol	Notes
201	(Symbol)	201
202	(Symbol)	202
203	(Symbol)	203
204	(Symbol)	204
205	(Symbol)	205
206	(Symbol)	206
207	(Symbol)	207
208	(Symbol)	208
209	(Symbol)	209
210	(Symbol)	210
211	(Symbol)	211
212	(Symbol)	212
213	(Symbol)	213
214	(Symbol)	214
215	(Symbol)	215
216	(Symbol)	216
217	(Symbol)	217
218	(Symbol)	218
219	(Symbol)	219
220	(Symbol)	220
221	(Symbol)	221
222	(Symbol)	222
223	(Symbol)	223
224	(Symbol)	224
225	(Symbol)	225
226	(Symbol)	226
227	(Symbol)	227
228	(Symbol)	228
229	(Symbol)	229
230	(Symbol)	230
231	(Symbol)	231
232	(Symbol)	232
233	(Symbol)	233
234	(Symbol)	234
235	(Symbol)	235
236	(Symbol)	236
237	(Symbol)	237
238	(Symbol)	238
239	(Symbol)	239
240	(Symbol)	240
241	(Symbol)	241
242	(Symbol)	242
243	(Symbol)	243
244	(Symbol)	244
245	(Symbol)	245
246	(Symbol)	246
247	(Symbol)	247
248	(Symbol)	248
249	(Symbol)	249
250	(Symbol)	250



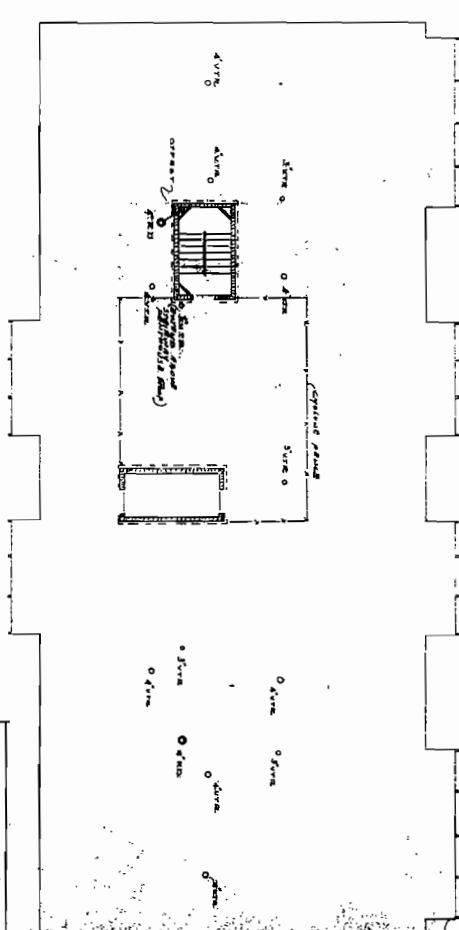
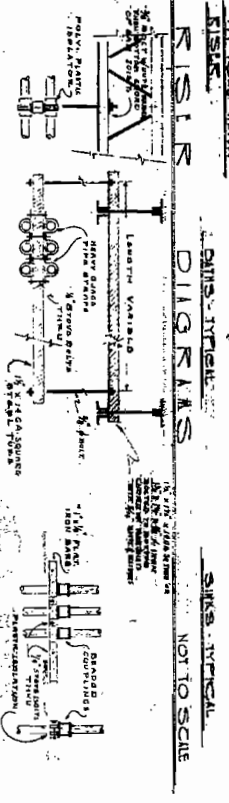
SCHED-ULC FOR PANEL CABINET & WIRE SIZES



TYPICAL FLOOR PLAN
2ND 3RD BTH ROOM
SCALE 1/8" = 1'-0"



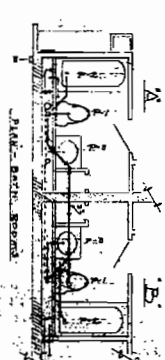
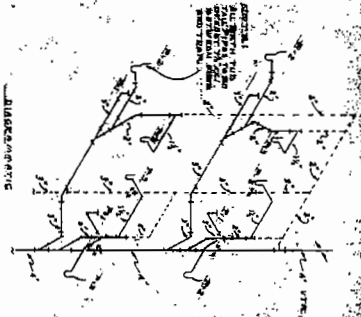
NOTE:
 1. ALL WATER & WASTE
 2. IN ALL WATER & WASTE
 3. IN ALL WATER & WASTE
 4. IN ALL WATER & WASTE
 5. IN ALL WATER & WASTE
 6. IN ALL WATER & WASTE
 7. IN ALL WATER & WASTE
 8. IN ALL WATER & WASTE
 9. IN ALL WATER & WASTE
 10. IN ALL WATER & WASTE
 11. IN ALL WATER & WASTE
 12. IN ALL WATER & WASTE
 13. IN ALL WATER & WASTE
 14. IN ALL WATER & WASTE
 15. IN ALL WATER & WASTE
 16. IN ALL WATER & WASTE
 17. IN ALL WATER & WASTE
 18. IN ALL WATER & WASTE
 19. IN ALL WATER & WASTE
 20. IN ALL WATER & WASTE
 21. IN ALL WATER & WASTE
 22. IN ALL WATER & WASTE
 23. IN ALL WATER & WASTE
 24. IN ALL WATER & WASTE
 25. IN ALL WATER & WASTE
 26. IN ALL WATER & WASTE
 27. IN ALL WATER & WASTE
 28. IN ALL WATER & WASTE
 29. IN ALL WATER & WASTE
 30. IN ALL WATER & WASTE
 31. IN ALL WATER & WASTE
 32. IN ALL WATER & WASTE
 33. IN ALL WATER & WASTE
 34. IN ALL WATER & WASTE
 35. IN ALL WATER & WASTE
 36. IN ALL WATER & WASTE
 37. IN ALL WATER & WASTE
 38. IN ALL WATER & WASTE
 39. IN ALL WATER & WASTE
 40. IN ALL WATER & WASTE
 41. IN ALL WATER & WASTE
 42. IN ALL WATER & WASTE
 43. IN ALL WATER & WASTE
 44. IN ALL WATER & WASTE
 45. IN ALL WATER & WASTE
 46. IN ALL WATER & WASTE
 47. IN ALL WATER & WASTE
 48. IN ALL WATER & WASTE
 49. IN ALL WATER & WASTE
 50. IN ALL WATER & WASTE
 51. IN ALL WATER & WASTE
 52. IN ALL WATER & WASTE
 53. IN ALL WATER & WASTE
 54. IN ALL WATER & WASTE
 55. IN ALL WATER & WASTE
 56. IN ALL WATER & WASTE
 57. IN ALL WATER & WASTE
 58. IN ALL WATER & WASTE
 59. IN ALL WATER & WASTE
 60. IN ALL WATER & WASTE
 61. IN ALL WATER & WASTE
 62. IN ALL WATER & WASTE
 63. IN ALL WATER & WASTE
 64. IN ALL WATER & WASTE
 65. IN ALL WATER & WASTE
 66. IN ALL WATER & WASTE
 67. IN ALL WATER & WASTE
 68. IN ALL WATER & WASTE
 69. IN ALL WATER & WASTE
 70. IN ALL WATER & WASTE
 71. IN ALL WATER & WASTE
 72. IN ALL WATER & WASTE
 73. IN ALL WATER & WASTE
 74. IN ALL WATER & WASTE
 75. IN ALL WATER & WASTE
 76. IN ALL WATER & WASTE
 77. IN ALL WATER & WASTE
 78. IN ALL WATER & WASTE
 79. IN ALL WATER & WASTE
 80. IN ALL WATER & WASTE
 81. IN ALL WATER & WASTE
 82. IN ALL WATER & WASTE
 83. IN ALL WATER & WASTE
 84. IN ALL WATER & WASTE
 85. IN ALL WATER & WASTE
 86. IN ALL WATER & WASTE
 87. IN ALL WATER & WASTE
 88. IN ALL WATER & WASTE
 89. IN ALL WATER & WASTE
 90. IN ALL WATER & WASTE
 91. IN ALL WATER & WASTE
 92. IN ALL WATER & WASTE
 93. IN ALL WATER & WASTE
 94. IN ALL WATER & WASTE
 95. IN ALL WATER & WASTE
 96. IN ALL WATER & WASTE
 97. IN ALL WATER & WASTE
 98. IN ALL WATER & WASTE
 99. IN ALL WATER & WASTE
 100. IN ALL WATER & WASTE



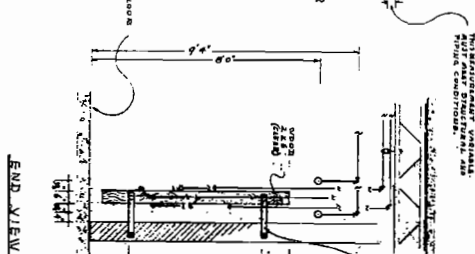
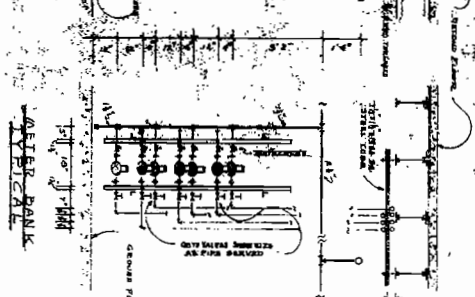
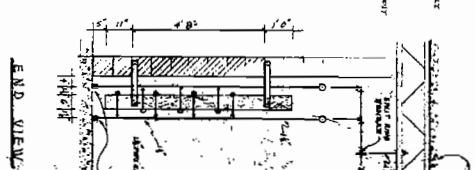
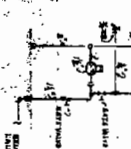
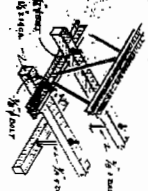
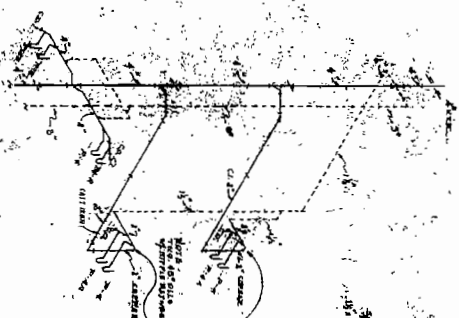
WATER & SOIL PIPE DISTRIBUTION PLAN (GROUND FLOOR DINING AREA) 1/8" = 1'-0"

PUMPING ROOM PLAN 1/8" = 1'-0"

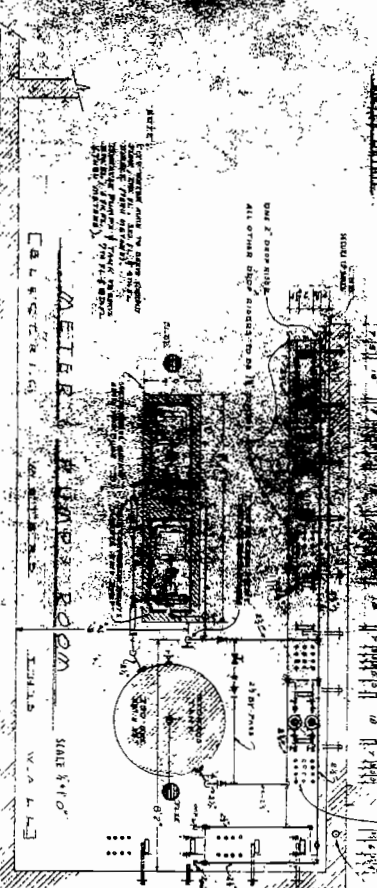
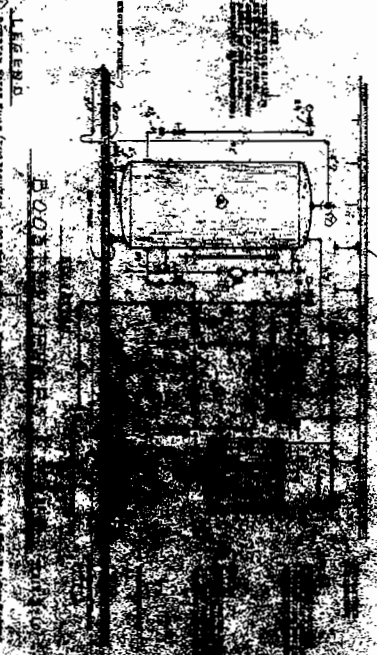
NO.	DATE	REVISION
1	10/1/50	PRELIMINARY
2	10/15/50	REVISED
3	10/20/50	REVISED
4	10/25/50	REVISED
5	10/30/50	REVISED
6	11/5/50	REVISED
7	11/10/50	REVISED
8	11/15/50	REVISED
9	11/20/50	REVISED
10	11/25/50	REVISED
11	12/1/50	REVISED
12	12/5/50	REVISED
13	12/10/50	REVISED
14	12/15/50	REVISED
15	12/20/50	REVISED
16	12/25/50	REVISED
17	1/1/51	REVISED
18	1/5/51	REVISED
19	1/10/51	REVISED
20	1/15/51	REVISED
21	1/20/51	REVISED
22	1/25/51	REVISED
23	1/30/51	REVISED
24	2/5/51	REVISED
25	2/10/51	REVISED
26	2/15/51	REVISED
27	2/20/51	REVISED
28	2/25/51	REVISED
29	3/1/51	REVISED
30	3/5/51	REVISED
31	3/10/51	REVISED
32	3/15/51	REVISED
33	3/20/51	REVISED
34	3/25/51	REVISED
35	4/1/51	REVISED
36	4/5/51	REVISED
37	4/10/51	REVISED
38	4/15/51	REVISED
39	4/20/51	REVISED
40	4/25/51	REVISED
41	5/1/51	REVISED
42	5/5/51	REVISED
43	5/10/51	REVISED
44	5/15/51	REVISED
45	5/20/51	REVISED
46	5/25/51	REVISED
47	6/1/51	REVISED
48	6/5/51	REVISED
49	6/10/51	REVISED
50	6/15/51	REVISED
51	6/20/51	REVISED
52	6/25/51	REVISED
53	7/1/51	REVISED
54	7/5/51	REVISED
55	7/10/51	REVISED
56	7/15/51	REVISED
57	7/20/51	REVISED
58	7/25/51	REVISED
59	8/1/51	REVISED
60	8/5/51	REVISED
61	8/10/51	REVISED
62	8/15/51	REVISED
63	8/20/51	REVISED
64	8/25/51	REVISED
65	9/1/51	REVISED
66	9/5/51	REVISED
67	9/10/51	REVISED
68	9/15/51	REVISED
69	9/20/51	REVISED
70	9/25/51	REVISED
71	10/1/51	REVISED
72	10/5/51	REVISED
73	10/10/51	REVISED
74	10/15/51	REVISED
75	10/20/51	REVISED
76	10/25/51	REVISED
77	11/1/51	REVISED
78	11/5/51	REVISED
79	11/10/51	REVISED
80	11/15/51	REVISED
81	11/20/51	REVISED
82	11/25/51	REVISED
83	12/1/51	REVISED
84	12/5/51	REVISED
85	12/10/51	REVISED
86	12/15/51	REVISED
87	12/20/51	REVISED
88	12/25/51	REVISED
89	1/1/52	REVISED
90	1/5/52	REVISED
91	1/10/52	REVISED
92	1/15/52	REVISED
93	1/20/52	REVISED
94	1/25/52	REVISED
95	2/1/52	REVISED
96	2/5/52	REVISED
97	2/10/52	REVISED
98	2/15/52	REVISED
99	2/20/52	REVISED
100	2/25/52	REVISED



PUMPING UNITS A, B - 7th & 8th FLOOR



ELEVATIONS SCALE 3/4" = 1'-0"

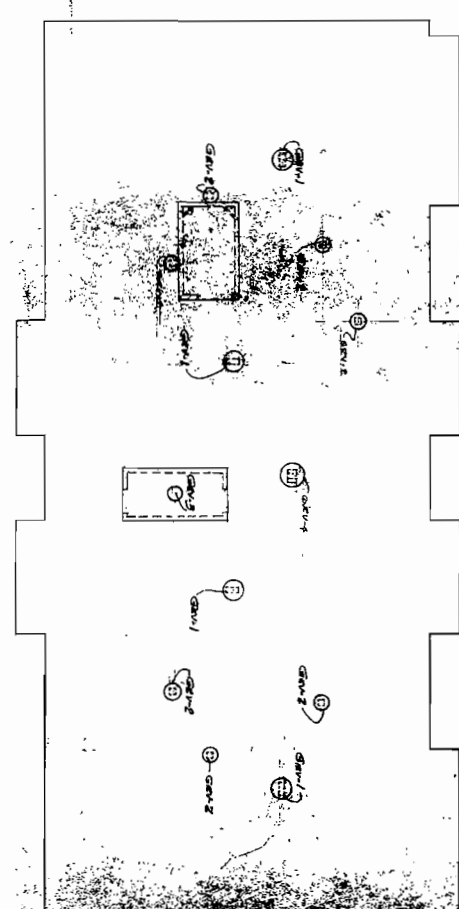
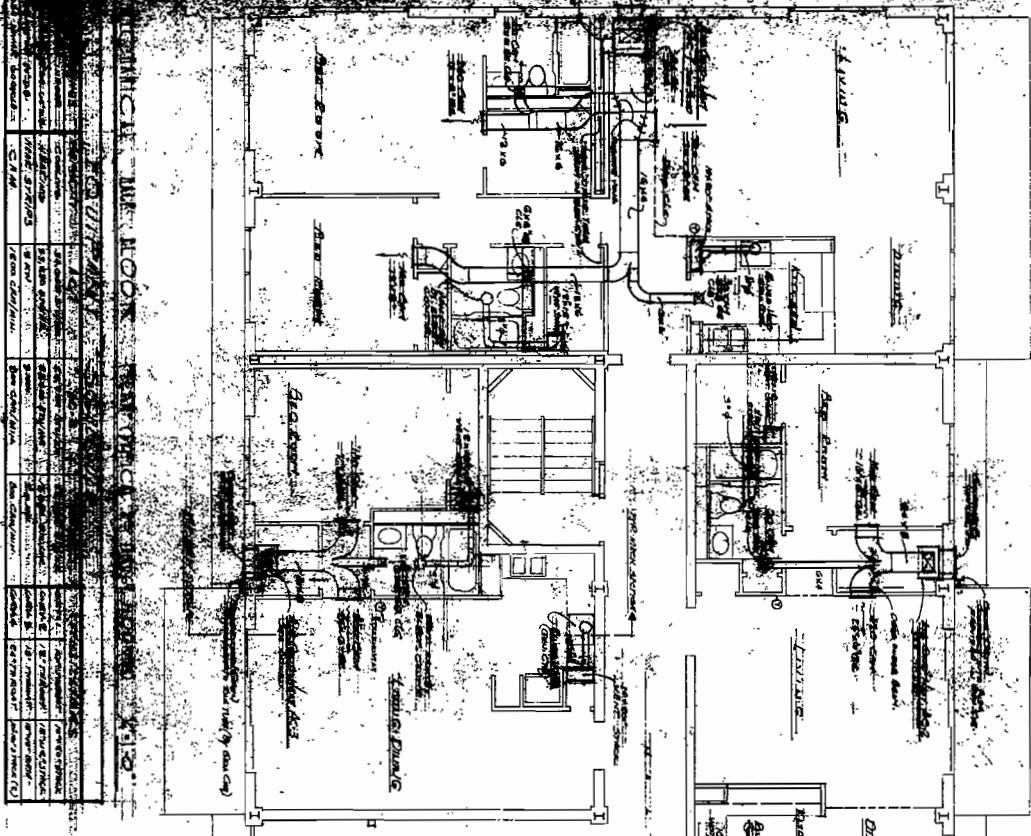


WATER METER PUMP & VALVE DETAILS

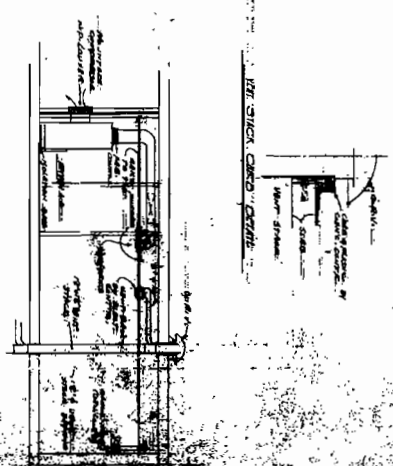
LEGEND

1. ALL DIMENSIONS TO FACE UNLESS OTHERWISE NOTED.
 2. FINISH FLOOR TO BE 1" ABOVE GRADE.
 3. SEE ELEVATIONS FOR FINISHES.

DATE	DESCRIPTION
1918	...
1919	...
1920	...
1921	...
1922	...
1923	...
1924	...
1925	...
1926	...
1927	...
1928	...
1929	...
1930	...
1931	...
1932	...
1933	...
1934	...
1935	...
1936	...
1937	...
1938	...
1939	...
1940	...
1941	...
1942	...
1943	...
1944	...
1945	...
1946	...
1947	...
1948	...
1949	...
1950	...



TYPICAL WALL CROSS SECTION



TYPICAL KITCHEN

NO.	DESCRIPTION	QTY	UNIT	PRICE	TOTAL
1
2
3
4
5
6
7
8
9
10
11
12
13
14
15
16
17
18
19
20
21
22
23
24
25
26
27
28
29
30
31
32
33
34
35
36
37
38
39
40
41
42
43
44
45
46
47
48
49
50

TYPICAL MECH. ROOM - FULL

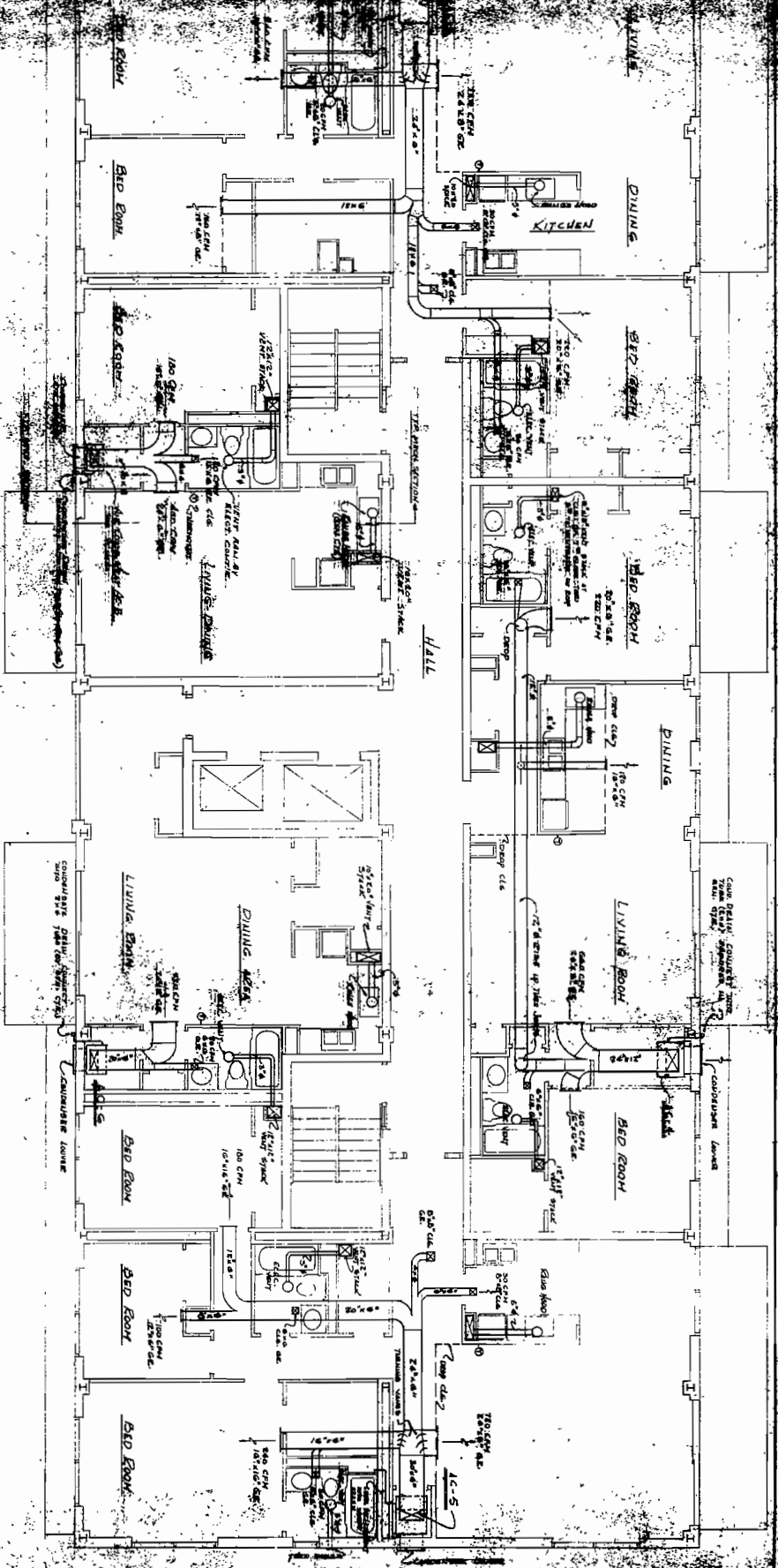
R. H. HARTIG & ASSOCIATES

NO.	DESCRIPTION	QTY	UNIT	PRICE	TOTAL
1
2
3
4
5
6
7
8
9
10
11
12
13
14
15
16
17
18
19
20
21
22
23
24
25
26
27
28
29
30
31
32
33
34
35
36
37
38
39
40
41
42
43
44
45
46
47
48
49
50

TYPICAL MECHANICAL PLAN (7TH & 8TH FLOORS)

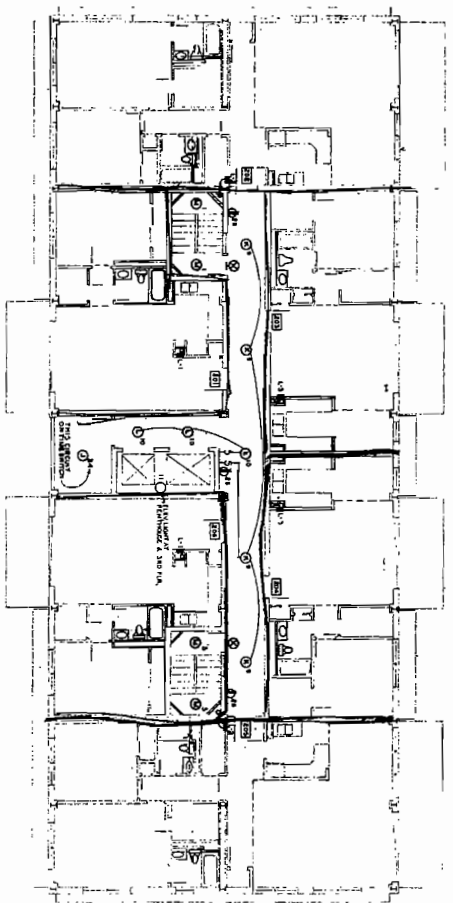
EQUIPMENT SCHEDULE

NO.	DESCRIPTION	QTY	UNIT	REMARKS
1	CONDENSING UNIT	1	12" x 12" x 24"	ROOF
2	CONDENSING UNIT	1	12" x 12" x 24"	ROOF
3	CONDENSING UNIT	1	12" x 12" x 24"	ROOF
4	CONDENSING UNIT	1	12" x 12" x 24"	ROOF
5	CONDENSING UNIT	1	12" x 12" x 24"	ROOF
6	CONDENSING UNIT	1	12" x 12" x 24"	ROOF
7	CONDENSING UNIT	1	12" x 12" x 24"	ROOF
8	CONDENSING UNIT	1	12" x 12" x 24"	ROOF
9	CONDENSING UNIT	1	12" x 12" x 24"	ROOF
10	CONDENSING UNIT	1	12" x 12" x 24"	ROOF
11	CONDENSING UNIT	1	12" x 12" x 24"	ROOF
12	CONDENSING UNIT	1	12" x 12" x 24"	ROOF
13	CONDENSING UNIT	1	12" x 12" x 24"	ROOF
14	CONDENSING UNIT	1	12" x 12" x 24"	ROOF
15	CONDENSING UNIT	1	12" x 12" x 24"	ROOF
16	CONDENSING UNIT	1	12" x 12" x 24"	ROOF
17	CONDENSING UNIT	1	12" x 12" x 24"	ROOF
18	CONDENSING UNIT	1	12" x 12" x 24"	ROOF
19	CONDENSING UNIT	1	12" x 12" x 24"	ROOF
20	CONDENSING UNIT	1	12" x 12" x 24"	ROOF
21	CONDENSING UNIT	1	12" x 12" x 24"	ROOF
22	CONDENSING UNIT	1	12" x 12" x 24"	ROOF
23	CONDENSING UNIT	1	12" x 12" x 24"	ROOF
24	CONDENSING UNIT	1	12" x 12" x 24"	ROOF
25	CONDENSING UNIT	1	12" x 12" x 24"	ROOF
26	CONDENSING UNIT	1	12" x 12" x 24"	ROOF
27	CONDENSING UNIT	1	12" x 12" x 24"	ROOF
28	CONDENSING UNIT	1	12" x 12" x 24"	ROOF
29	CONDENSING UNIT	1	12" x 12" x 24"	ROOF
30	CONDENSING UNIT	1	12" x 12" x 24"	ROOF
31	CONDENSING UNIT	1	12" x 12" x 24"	ROOF
32	CONDENSING UNIT	1	12" x 12" x 24"	ROOF
33	CONDENSING UNIT	1	12" x 12" x 24"	ROOF
34	CONDENSING UNIT	1	12" x 12" x 24"	ROOF
35	CONDENSING UNIT	1	12" x 12" x 24"	ROOF
36	CONDENSING UNIT	1	12" x 12" x 24"	ROOF
37	CONDENSING UNIT	1	12" x 12" x 24"	ROOF
38	CONDENSING UNIT	1	12" x 12" x 24"	ROOF
39	CONDENSING UNIT	1	12" x 12" x 24"	ROOF
40	CONDENSING UNIT	1	12" x 12" x 24"	ROOF
41	CONDENSING UNIT	1	12" x 12" x 24"	ROOF
42	CONDENSING UNIT	1	12" x 12" x 24"	ROOF
43	CONDENSING UNIT	1	12" x 12" x 24"	ROOF
44	CONDENSING UNIT	1	12" x 12" x 24"	ROOF
45	CONDENSING UNIT	1	12" x 12" x 24"	ROOF
46	CONDENSING UNIT	1	12" x 12" x 24"	ROOF
47	CONDENSING UNIT	1	12" x 12" x 24"	ROOF
48	CONDENSING UNIT	1	12" x 12" x 24"	ROOF
49	CONDENSING UNIT	1	12" x 12" x 24"	ROOF
50	CONDENSING UNIT	1	12" x 12" x 24"	ROOF

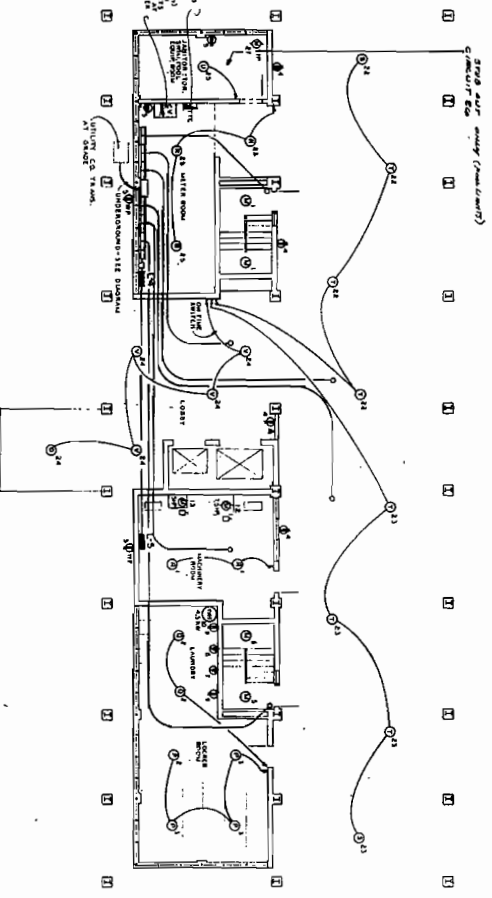


R. H. MATTS & ASSOCIATES

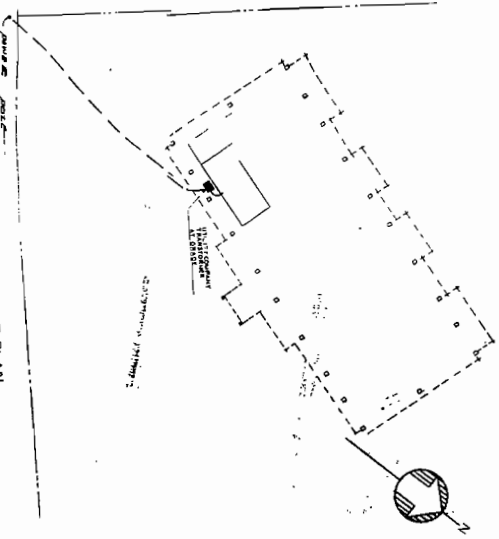
NO.	DESCRIPTION	QTY	UNIT	REMARKS
1	CONDENSING UNIT	1	12" x 12" x 24"	ROOF
2	CONDENSING UNIT	1	12" x 12" x 24"	ROOF
3	CONDENSING UNIT	1	12" x 12" x 24"	ROOF
4	CONDENSING UNIT	1	12" x 12" x 24"	ROOF
5	CONDENSING UNIT	1	12" x 12" x 24"	ROOF
6	CONDENSING UNIT	1	12" x 12" x 24"	ROOF
7	CONDENSING UNIT	1	12" x 12" x 24"	ROOF
8	CONDENSING UNIT	1	12" x 12" x 24"	ROOF
9	CONDENSING UNIT	1	12" x 12" x 24"	ROOF
10	CONDENSING UNIT	1	12" x 12" x 24"	ROOF
11	CONDENSING UNIT	1	12" x 12" x 24"	ROOF
12	CONDENSING UNIT	1	12" x 12" x 24"	ROOF
13	CONDENSING UNIT	1	12" x 12" x 24"	ROOF
14	CONDENSING UNIT	1	12" x 12" x 24"	ROOF
15	CONDENSING UNIT	1	12" x 12" x 24"	ROOF
16	CONDENSING UNIT	1	12" x 12" x 24"	ROOF
17	CONDENSING UNIT	1	12" x 12" x 24"	ROOF
18	CONDENSING UNIT	1	12" x 12" x 24"	ROOF
19	CONDENSING UNIT	1	12" x 12" x 24"	ROOF
20	CONDENSING UNIT	1	12" x 12" x 24"	ROOF
21	CONDENSING UNIT	1	12" x 12" x 24"	ROOF
22	CONDENSING UNIT	1	12" x 12" x 24"	ROOF
23	CONDENSING UNIT	1	12" x 12" x 24"	ROOF
24	CONDENSING UNIT	1	12" x 12" x 24"	ROOF
25	CONDENSING UNIT	1	12" x 12" x 24"	ROOF
26	CONDENSING UNIT	1	12" x 12" x 24"	ROOF
27	CONDENSING UNIT	1	12" x 12" x 24"	ROOF
28	CONDENSING UNIT	1	12" x 12" x 24"	ROOF
29	CONDENSING UNIT	1	12" x 12" x 24"	ROOF
30	CONDENSING UNIT	1	12" x 12" x 24"	ROOF
31	CONDENSING UNIT	1	12" x 12" x 24"	ROOF
32	CONDENSING UNIT	1	12" x 12" x 24"	ROOF
33	CONDENSING UNIT	1	12" x 12" x 24"	ROOF
34	CONDENSING UNIT	1	12" x 12" x 24"	ROOF
35	CONDENSING UNIT	1	12" x 12" x 24"	ROOF
36	CONDENSING UNIT	1	12" x 12" x 24"	ROOF
37	CONDENSING UNIT	1	12" x 12" x 24"	ROOF
38	CONDENSING UNIT	1	12" x 12" x 24"	ROOF
39	CONDENSING UNIT	1	12" x 12" x 24"	ROOF
40	CONDENSING UNIT	1	12" x 12" x 24"	ROOF
41	CONDENSING UNIT	1	12" x 12" x 24"	ROOF
42	CONDENSING UNIT	1	12" x 12" x 24"	ROOF
43	CONDENSING UNIT	1	12" x 12" x 24"	ROOF
44	CONDENSING UNIT	1	12" x 12" x 24"	ROOF
45	CONDENSING UNIT	1	12" x 12" x 24"	ROOF
46	CONDENSING UNIT	1	12" x 12" x 24"	ROOF
47	CONDENSING UNIT	1	12" x 12" x 24"	ROOF
48	CONDENSING UNIT	1	12" x 12" x 24"	ROOF
49	CONDENSING UNIT	1	12" x 12" x 24"	ROOF
50	CONDENSING UNIT	1	12" x 12" x 24"	ROOF



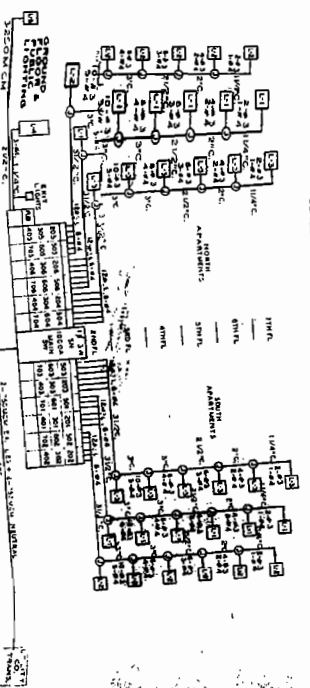
SECOND FLOOR ELECTRICAL PLAN
TYPICAL FLOOR PLAN AND THIRD FLOOR
SCALE 1/8" = 1' - 0"



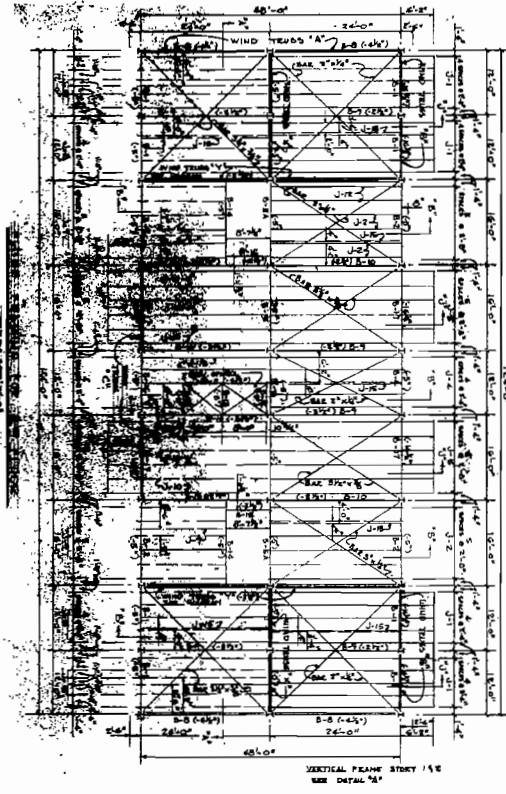
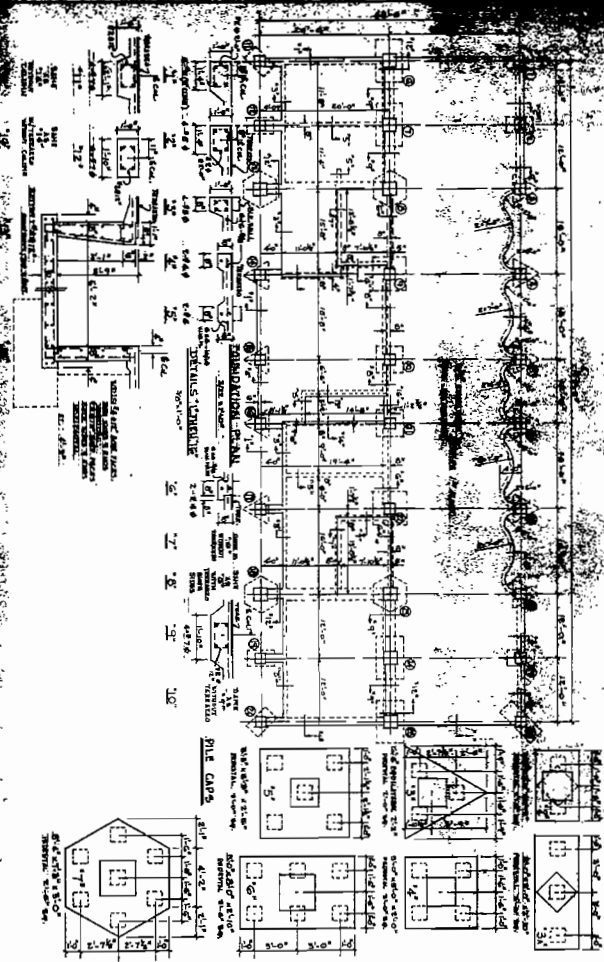
GROUND FLOOR ELECTRICAL PLAN
SCALE 1/8" = 1' - 0"



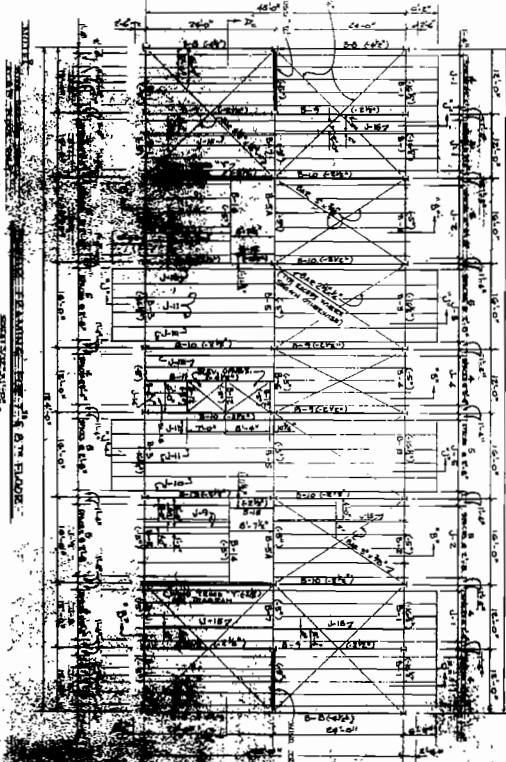
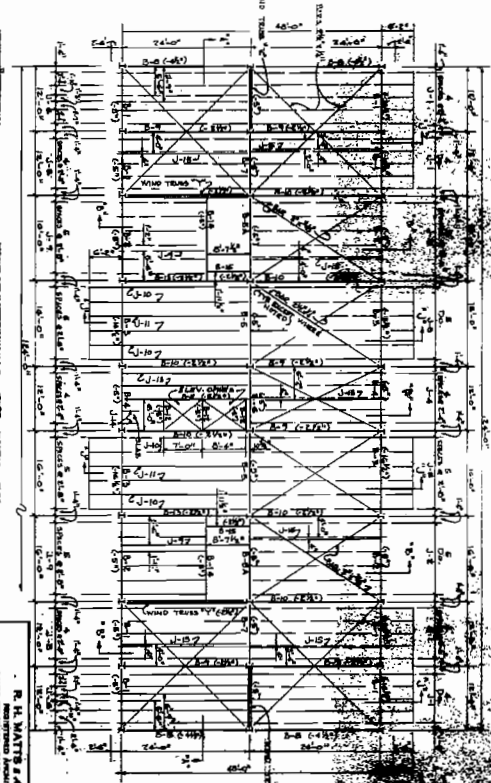
ELECTRICAL PLOT PLAN
SCALE 1" = 20'



R. L. MATTS & Associates	
REGISTERED ARCHITECTS	
REGISTERED ELECTRICAL ENGINEERS	
DATE	PROJECT
NO. OF SHEETS	NO. OF SHEETS
BY	FOR
APARTMENT BUILDING	HARBOR TOWERS CONY
FOOT VESTAL, FLORIDA	



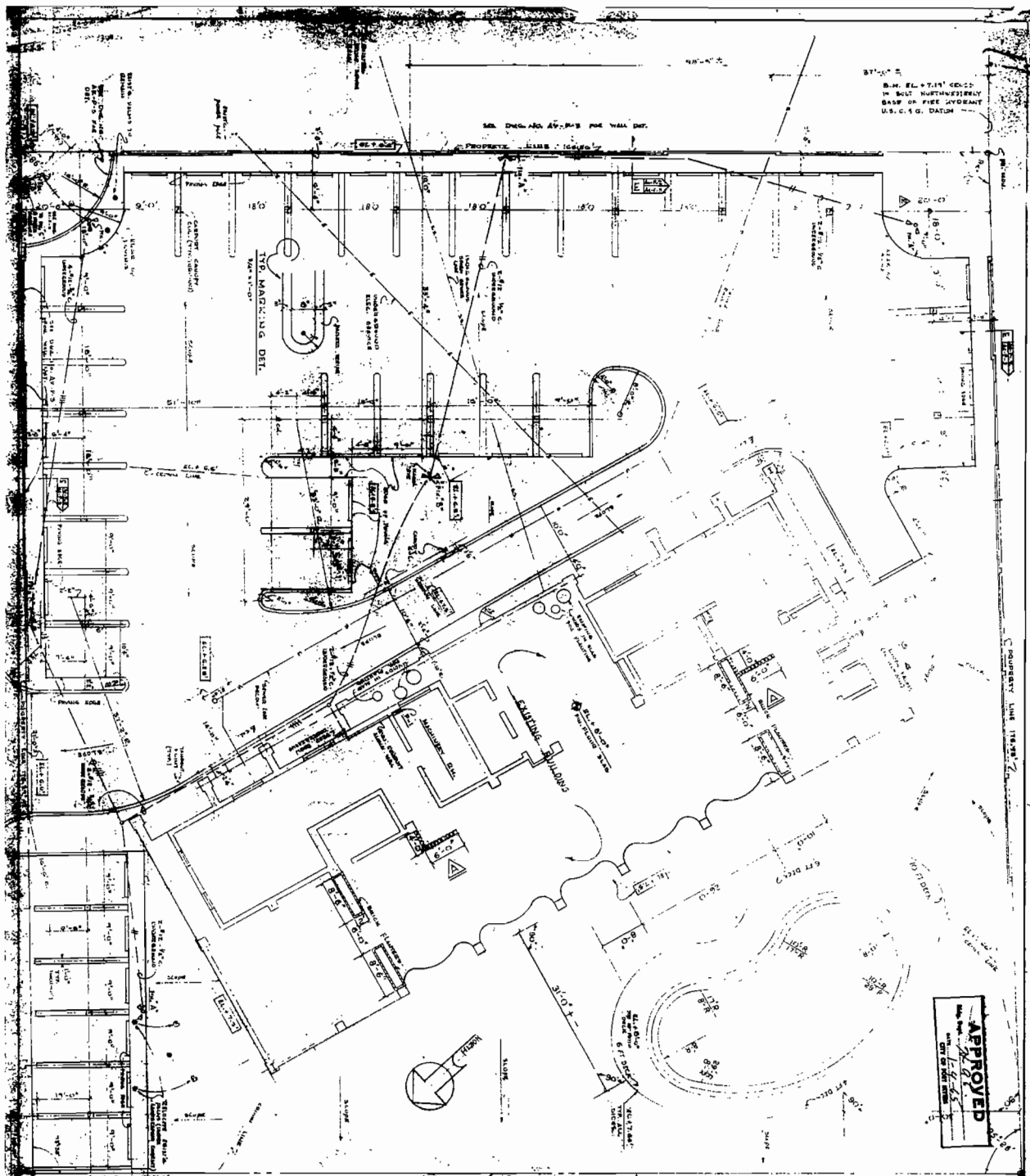
VERTICAL FRAME STORY 1' & 2'
SEE DETAIL 'A'



REVISIONS	
NO.	DESCRIPTION
1	AS SHOWN
2	AS SHOWN
3	AS SHOWN
4	AS SHOWN
5	AS SHOWN
6	AS SHOWN
7	AS SHOWN
8	AS SHOWN
9	AS SHOWN
10	AS SHOWN

R. H. WATTS & ASSOCIATES
STRUCTURAL ENGINEERS
1000 ...
MEMPHIS, TENNESSEE

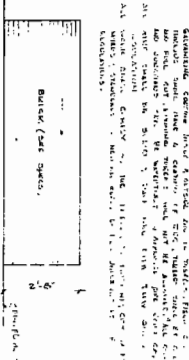
ALL ELEVATIONS REFERRED TO THIS POINT UNLESS SPECIFICALLY NOTED OTHERWISE
 U.S.C. & G. DATUM



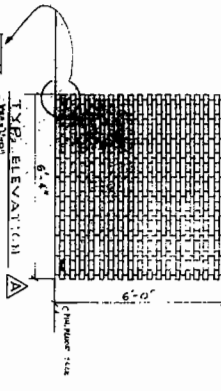
APPROVED
 [Signature]
 [Title]

ELECTRICAL SPECIFICATIONS

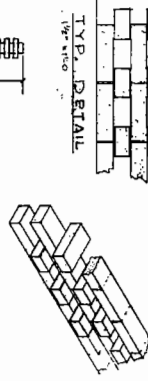
FIELD: THIS WORK IS TO BE INSTALLED IN ACCORDANCE WITH THE
 1975 NATIONAL ELECTRICAL CODE AND THE NATIONAL FIRE ALARM AND
 SIGNAL CODE AS AMENDED BY THE NATIONAL FIRE PROTECTION ASSOCIATION
 AND THE NATIONAL BOARD OF FIRE UNDERWRITERS.



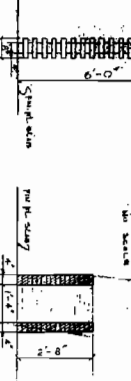
TYP. ELEVATOR ROCK PANEL



TYP. ELEVATOR SHAFT



ISOMETRIC BEVELED BRICK WALLS - TYPICAL



END VIEW BEVELED BRICK WALL - TYPICAL

PAVING & GRADING PLAN

NOTE: ALL NEW SERVICE SHALL BE INSTALLED IN ACCORDANCE WITH THE LATEST EDITIONS OF THE NATIONAL ELECTRICAL CODE AND THE NATIONAL FIRE ALARM AND SIGNAL CODE AS AMENDED BY THE NATIONAL FIRE PROTECTION ASSOCIATION AND THE NATIONAL BOARD OF FIRE UNDERWRITERS.

DATE: 10/15/75
 DRAWN BY: [Name]
 CHECKED BY: [Name]

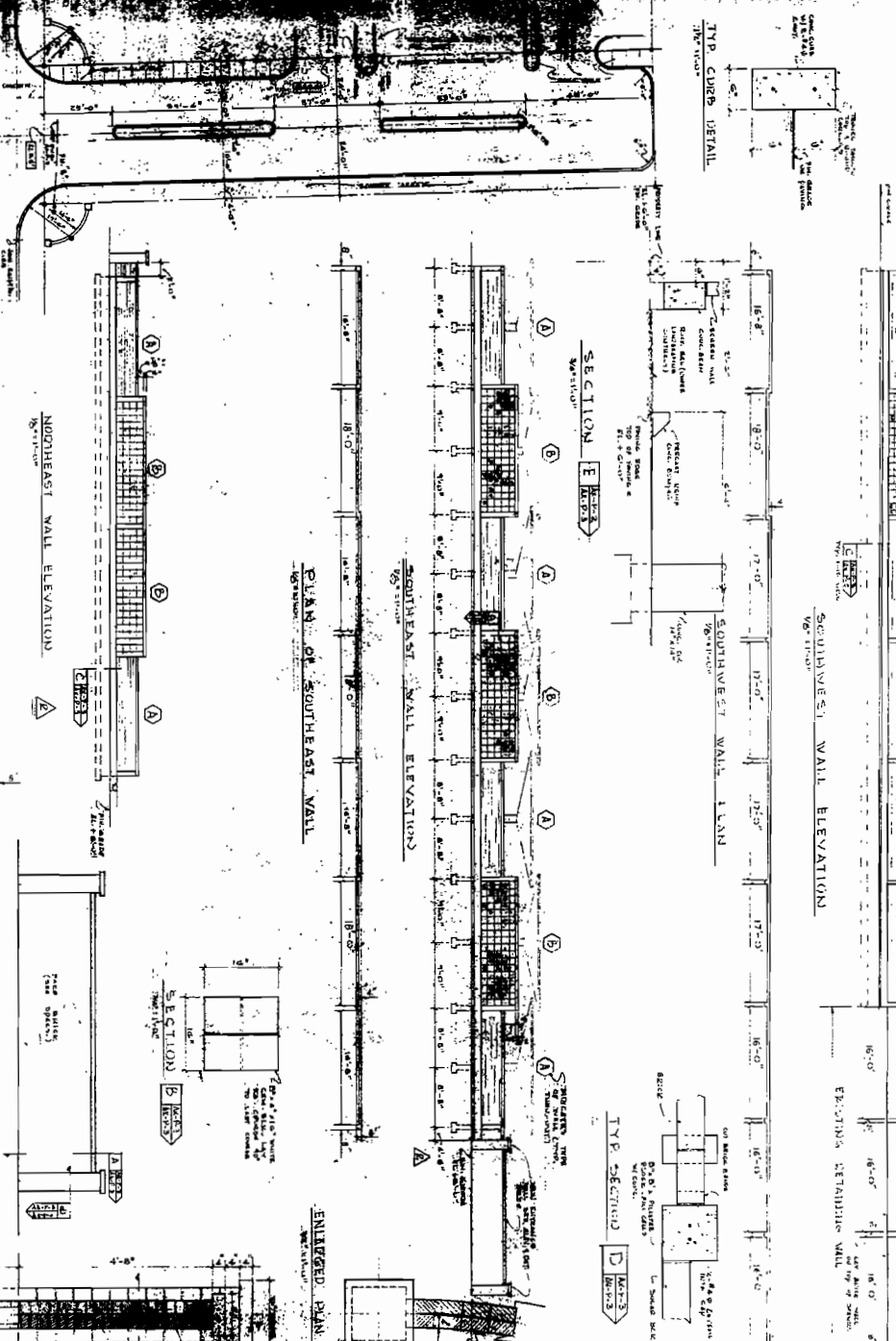
NO.	REVISION	DATE	BY
1	ISSUE FOR PERMIT	10/15/75	[Name]
2	REVISION	10/15/75	[Name]
3	REVISION	10/15/75	[Name]
4	REVISION	10/15/75	[Name]
5	REVISION	10/15/75	[Name]

INDICATED SYMBOLS
 H. T. C.

TYP. BUMPER DETAIL



TYP. CURB DETAIL



ENHANCED BUMPER



SECTION A (M) 3'-0"



SECTION B (M) 3'-0"



SECTION C (M) 3'-0"



SECTION D (M) 3'-0"



SECTION E (M) 3'-0"



DEFINITIONS

SECTION A: SEE DRAWING FOR DIMENSIONS AND NOTES. ALL DIMENSIONS UNLESS OTHERWISE NOTED ARE IN FEET AND INCHES. FINISH TO FACE UNLESS OTHERWISE NOTED.

SECTION B: SEE DRAWING FOR DIMENSIONS AND NOTES. ALL DIMENSIONS UNLESS OTHERWISE NOTED ARE IN FEET AND INCHES. FINISH TO FACE UNLESS OTHERWISE NOTED.

SECTION C: SEE DRAWING FOR DIMENSIONS AND NOTES. ALL DIMENSIONS UNLESS OTHERWISE NOTED ARE IN FEET AND INCHES. FINISH TO FACE UNLESS OTHERWISE NOTED.

SECTION D: SEE DRAWING FOR DIMENSIONS AND NOTES. ALL DIMENSIONS UNLESS OTHERWISE NOTED ARE IN FEET AND INCHES. FINISH TO FACE UNLESS OTHERWISE NOTED.

SECTION E: SEE DRAWING FOR DIMENSIONS AND NOTES. ALL DIMENSIONS UNLESS OTHERWISE NOTED ARE IN FEET AND INCHES. FINISH TO FACE UNLESS OTHERWISE NOTED.

CONCRETE: ALL CONCRETE SHALL BE 4000 PSI STRENGTH CONCRETE. ALL CONCRETE SHALL BE CAST IN PLACE AND CURED PROPERLY.

STEEL: ALL STEEL SHALL BE A36 STEEL UNLESS OTHERWISE NOTED.

WOOD: ALL WOOD SHALL BE DRY-KNIGHT DOUGLASS FIR UNLESS OTHERWISE NOTED.

PAINT: ALL PAINTS SHALL BE PRIMER AND FINISH UNLESS OTHERWISE NOTED.

FINISHES: ALL FINISHES SHALL BE AS SHOWN ON DRAWINGS. FINISHES SHALL BE TO FACE UNLESS OTHERWISE NOTED.

NOTES:

1. ALL DIMENSIONS UNLESS OTHERWISE NOTED ARE IN FEET AND INCHES. FINISH TO FACE UNLESS OTHERWISE NOTED.

2. ALL CONCRETE SHALL BE 4000 PSI STRENGTH CONCRETE. ALL CONCRETE SHALL BE CAST IN PLACE AND CURED PROPERLY.

3. ALL STEEL SHALL BE A36 STEEL UNLESS OTHERWISE NOTED.

4. ALL WOOD SHALL BE DRY-KNIGHT DOUGLASS FIR UNLESS OTHERWISE NOTED.

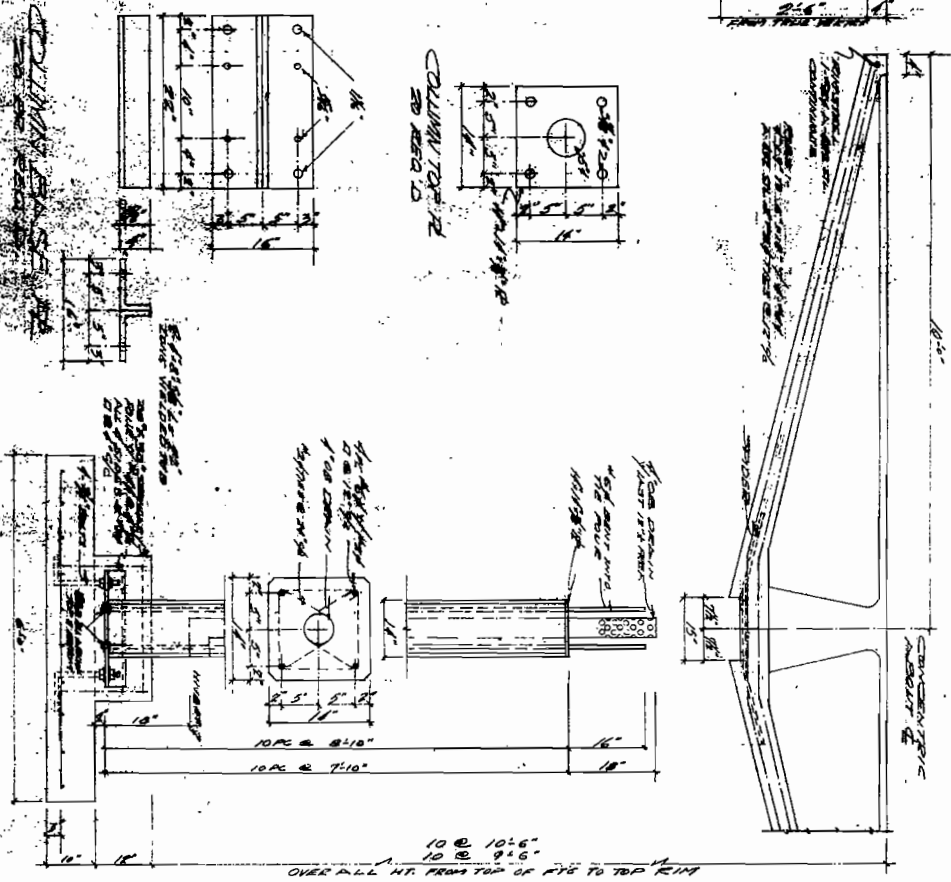
5. ALL PAINTS SHALL BE PRIMER AND FINISH UNLESS OTHERWISE NOTED.

6. ALL FINISHES SHALL BE AS SHOWN ON DRAWINGS. FINISHES SHALL BE TO FACE UNLESS OTHERWISE NOTED.

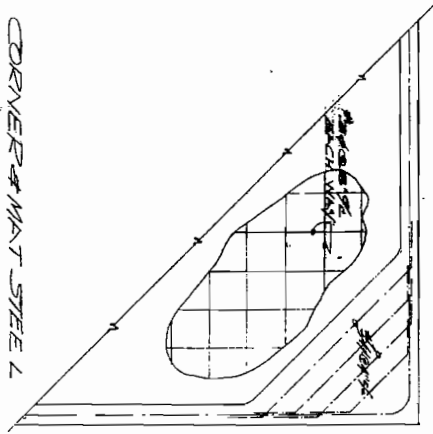
DATE:	08/21/19
DRAWN BY:	JAY C. [UNRECOGNIZABLE]
CHECKED BY:	JAY C. [UNRECOGNIZABLE]
PROJECT:	HARBOR TOWNS
CLIENT:	HARBOR TOWNS
CONTRACT:	CONDOMINIUM
ADDRESS:	1000 [UNRECOGNIZABLE]
CITY:	HONOLULU
STATE:	HAWAII
COUNTY:	HONOLULU

ELEVATION OF SECTION 3

FOOTING
 CLEARANCE 10" BY 10" W/ 10# REBAR 6" DIA.



CORNER MAT STEEL

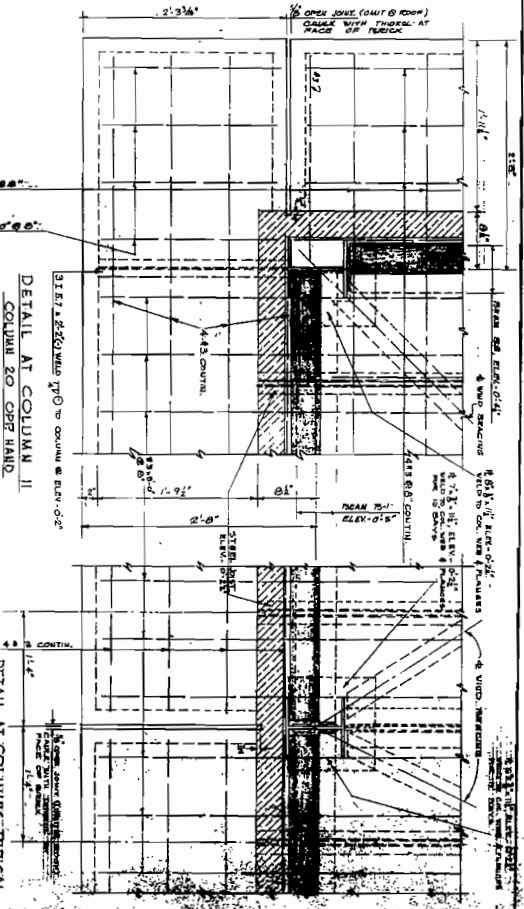
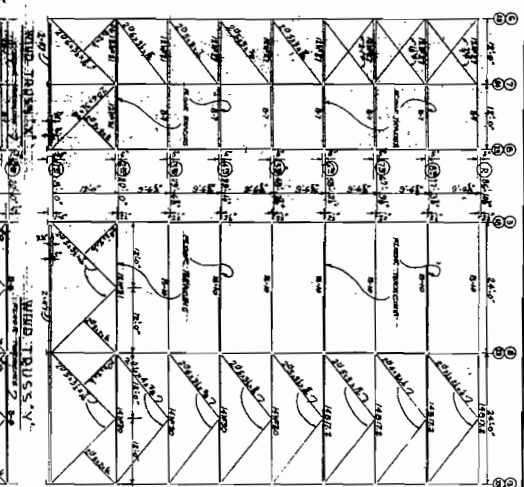


NOTE
 CONSTRUCTION -
 TO CONFORM TO THE S.F. BUILDING CODE &
 DESIGN -
 20 PSI ± VERT. L.
 60 PSI ± HORIZ.
 ALL REBAR IN RISER & RIM STEEL
 OTHER REBAR AS PER ARCH. SPEC. TO
 OVERLAY V.A.C.I. REINFORCING
 REBAR LAPS TO BE
 WELDING TO CORNER V.A.C.I. REINFORCING

DESIGNED BY	DATE
CHECKED BY	DATE
APPROVED BY	DATE
PROJECT	NO.
CLIENT	NO.
SCALE	NO.
WEST COAST SHIELD CORPORATION TAMPA, FLORIDA	
30-20 INDUSTRIAL AVENUE, TAMPA, FLORIDA 33604 FIRST FLOOR SOUTH CORNER 2750 WEST NINTH STREET, 1ST FLOOR TAMPA, FLORIDA 33604 SLOTTED REINFORCING DATE 5-10-64	

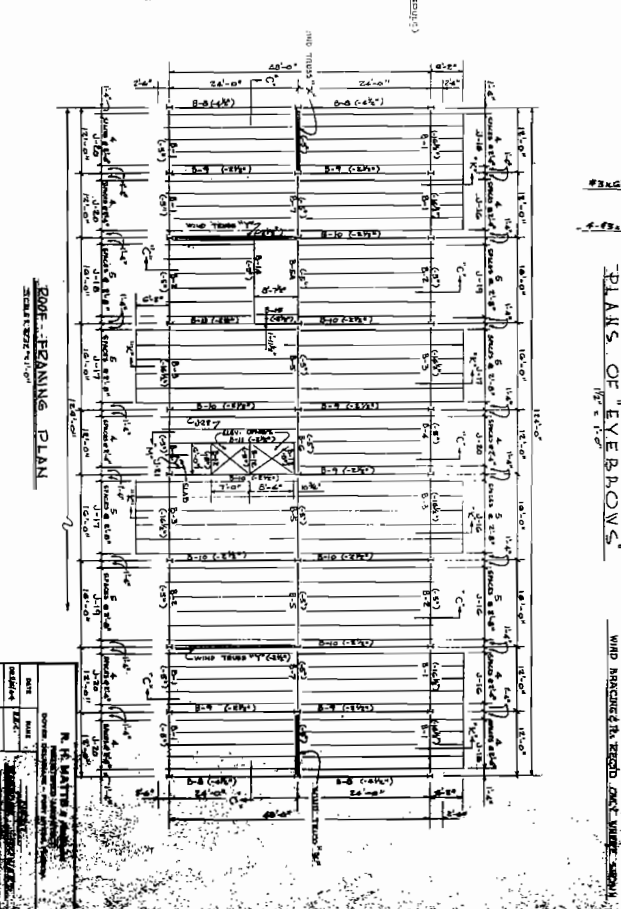
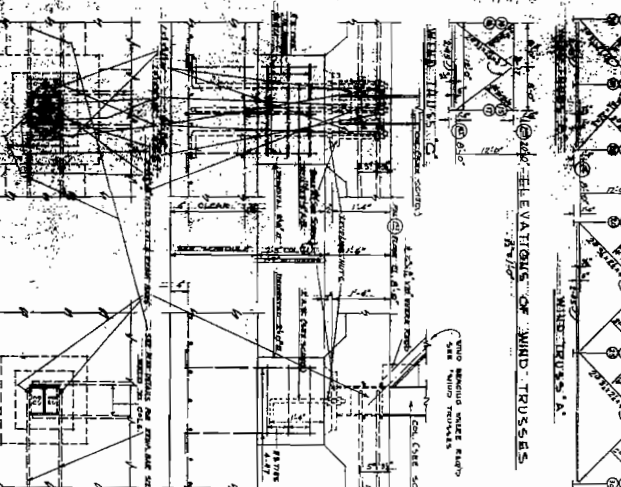
LOAD SCHEDULE

NO.	DESCRIPTION	UNIT	AMOUNT	TOTAL
1	DEAD LOAD	LB/SQ FT	1.00	1.00
2	LIVE LOAD	LB/SQ FT	2.00	2.00
3	WIND LOAD	LB/SQ FT	1.50	1.50
4	ICE LOAD	LB/SQ FT	0.50	0.50
5	SEMI-PROBABLE COMBINATION	LB/SQ FT	3.00	3.00
6	WIND + LIVE	LB/SQ FT	3.50	3.50
7	WIND + DEAD	LB/SQ FT	2.50	2.50
8	WIND + DEAD + LIVE	LB/SQ FT	4.50	4.50
9	WIND + DEAD + LIVE + ICE	LB/SQ FT	5.00	5.00
10	WIND + DEAD + LIVE + ICE + WIND	LB/SQ FT	6.50	6.50

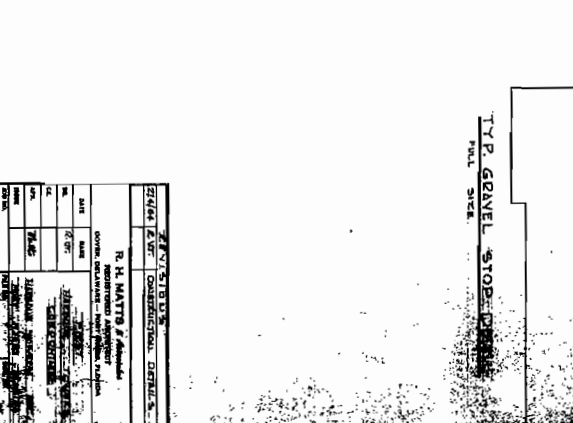
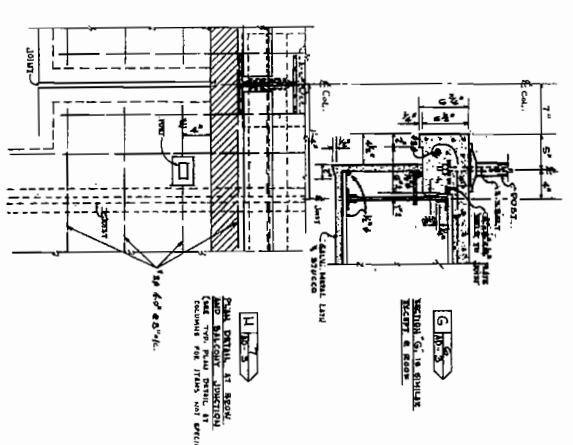
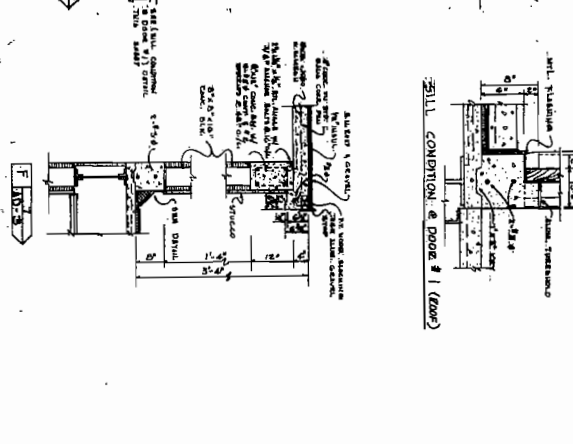
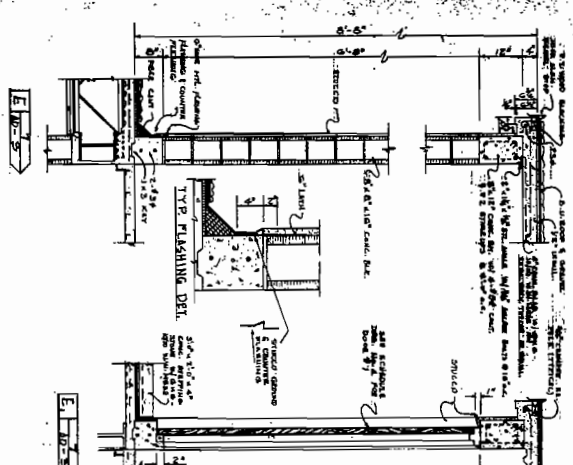
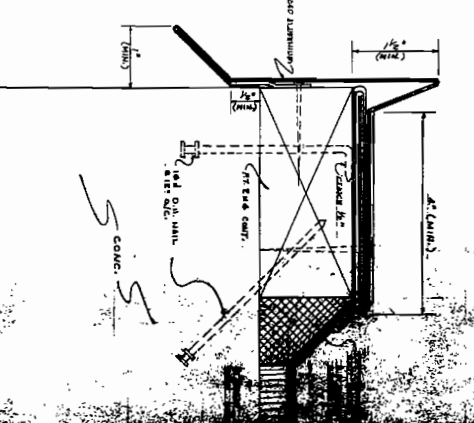
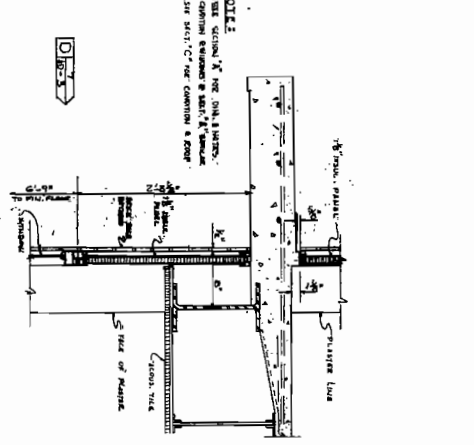
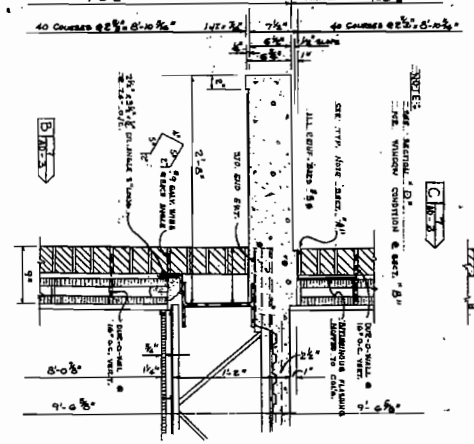
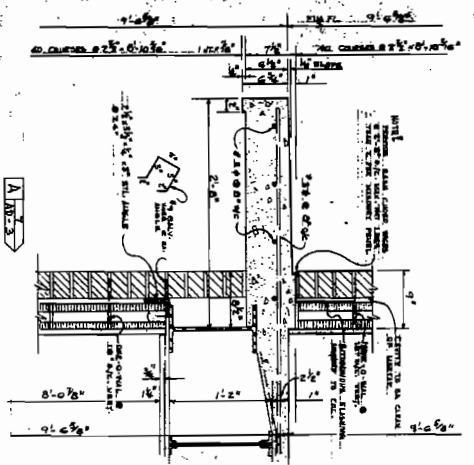


PILE CAP SCHEDULE

NO.	DESCRIPTION	UNIT	AMOUNT	TOTAL
1	PILE CAP	CU YD	1.00	1.00
2	PILE	LINEAL FT	100.00	100.00
3	PILE CAP	CU YD	1.00	1.00
4	PILE	LINEAL FT	100.00	100.00
5	PILE CAP	CU YD	1.00	1.00
6	PILE	LINEAL FT	100.00	100.00
7	PILE CAP	CU YD	1.00	1.00
8	PILE	LINEAL FT	100.00	100.00
9	PILE CAP	CU YD	1.00	1.00
10	PILE	LINEAL FT	100.00	100.00



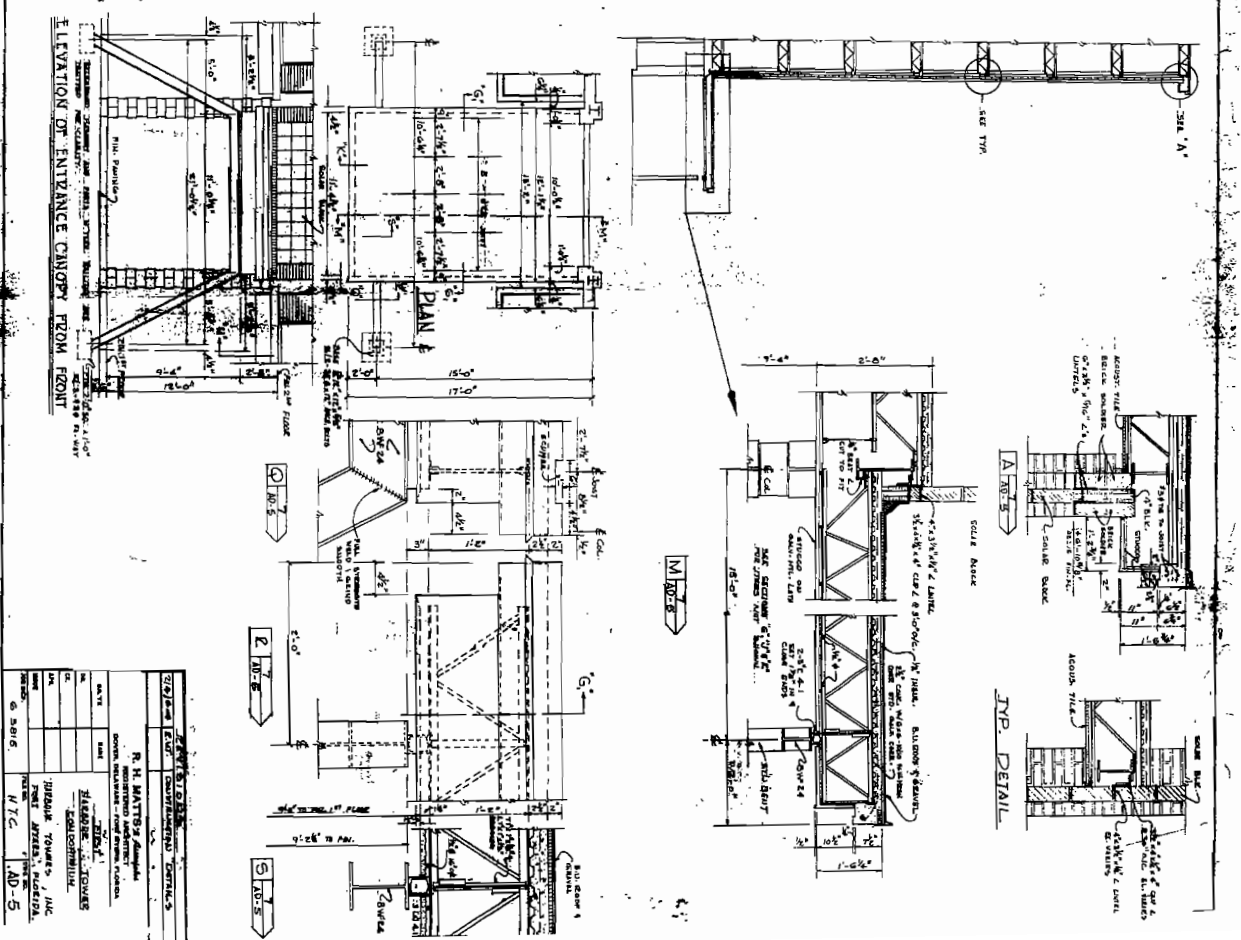
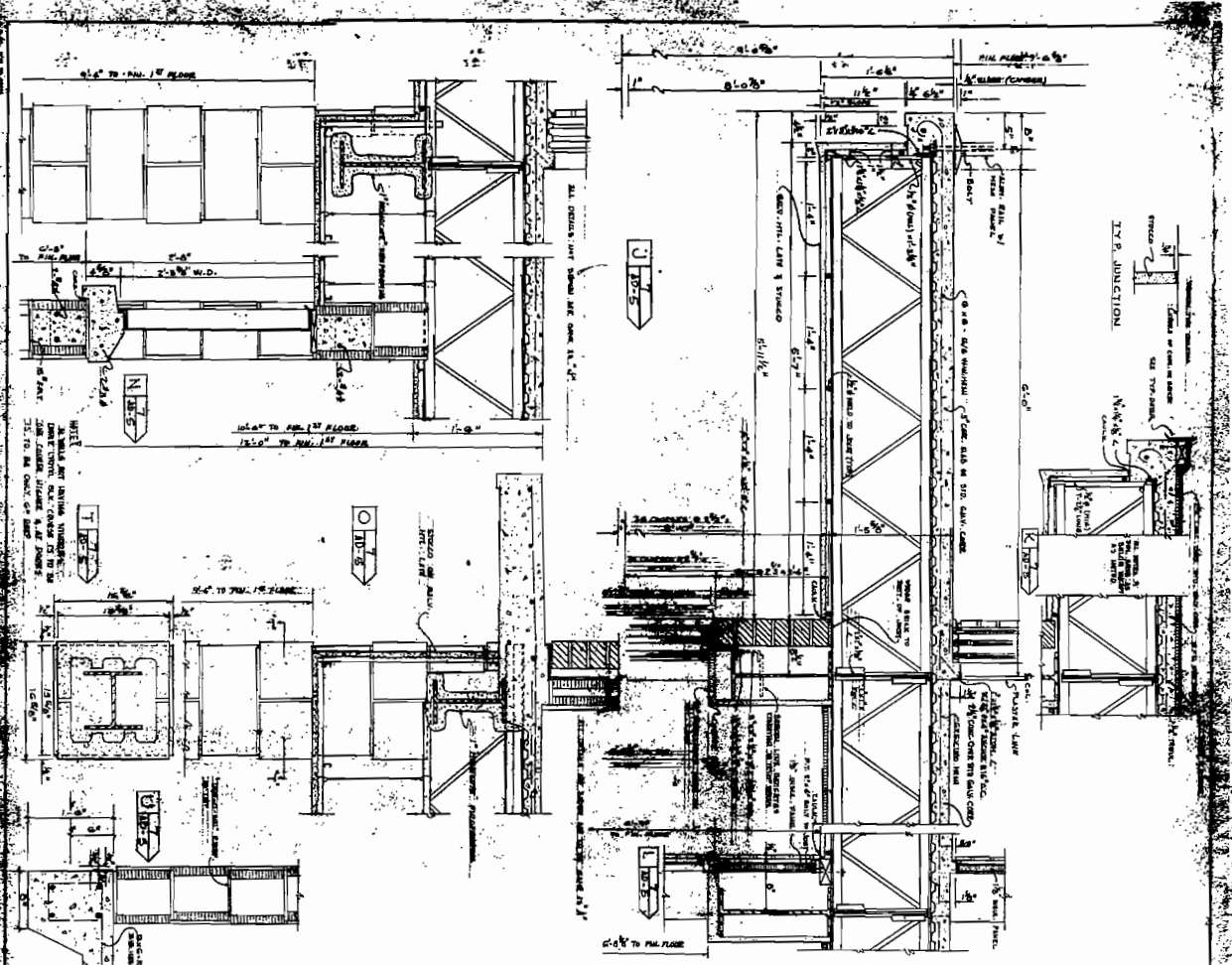
REMARKS: ALL DIMENSIONS ARE IN FEET AND INCHES. UNLESS OTHERWISE SPECIFIED, ALL MATERIALS SHALL BE AS SHOWN ON THE DRAWINGS. THE CONTRACTOR SHALL BE RESPONSIBLE FOR OBTAINING ALL NECESSARY PERMITS AND APPROVALS FROM THE LOCAL AUTHORITIES. THE CONTRACTOR SHALL BE RESPONSIBLE FOR THE PROTECTION OF ALL EXISTING UTILITIES AND STRUCTURES. THE CONTRACTOR SHALL BE RESPONSIBLE FOR THE PROTECTION OF ALL EXISTING UTILITIES AND STRUCTURES. THE CONTRACTOR SHALL BE RESPONSIBLE FOR THE PROTECTION OF ALL EXISTING UTILITIES AND STRUCTURES.



NO.	DATE	BY	CHKD.	DESCRIPTION
1	10/15/50	R. H. MATTHEWS		PRELIMINARY
2	11/15/50	R. H. MATTHEWS		REVISED
3	12/15/50	R. H. MATTHEWS		REVISED
4	1/15/51	R. H. MATTHEWS		REVISED
5	2/15/51	R. H. MATTHEWS		REVISED
6	3/15/51	R. H. MATTHEWS		REVISED
7	4/15/51	R. H. MATTHEWS		REVISED
8	5/15/51	R. H. MATTHEWS		REVISED
9	6/15/51	R. H. MATTHEWS		REVISED
10	7/15/51	R. H. MATTHEWS		REVISED
11	8/15/51	R. H. MATTHEWS		REVISED
12	9/15/51	R. H. MATTHEWS		REVISED
13	10/15/51	R. H. MATTHEWS		REVISED
14	11/15/51	R. H. MATTHEWS		REVISED
15	12/15/51	R. H. MATTHEWS		REVISED
16	1/15/52	R. H. MATTHEWS		REVISED
17	2/15/52	R. H. MATTHEWS		REVISED
18	3/15/52	R. H. MATTHEWS		REVISED
19	4/15/52	R. H. MATTHEWS		REVISED
20	5/15/52	R. H. MATTHEWS		REVISED
21	6/15/52	R. H. MATTHEWS		REVISED
22	7/15/52	R. H. MATTHEWS		REVISED
23	8/15/52	R. H. MATTHEWS		REVISED
24	9/15/52	R. H. MATTHEWS		REVISED
25	10/15/52	R. H. MATTHEWS		REVISED
26	11/15/52	R. H. MATTHEWS		REVISED
27	12/15/52	R. H. MATTHEWS		REVISED
28	1/15/53	R. H. MATTHEWS		REVISED
29	2/15/53	R. H. MATTHEWS		REVISED
30	3/15/53	R. H. MATTHEWS		REVISED
31	4/15/53	R. H. MATTHEWS		REVISED
32	5/15/53	R. H. MATTHEWS		REVISED
33	6/15/53	R. H. MATTHEWS		REVISED
34	7/15/53	R. H. MATTHEWS		REVISED
35	8/15/53	R. H. MATTHEWS		REVISED
36	9/15/53	R. H. MATTHEWS		REVISED
37	10/15/53	R. H. MATTHEWS		REVISED
38	11/15/53	R. H. MATTHEWS		REVISED
39	12/15/53	R. H. MATTHEWS		REVISED
40	1/15/54	R. H. MATTHEWS		REVISED
41	2/15/54	R. H. MATTHEWS		REVISED
42	3/15/54	R. H. MATTHEWS		REVISED
43	4/15/54	R. H. MATTHEWS		REVISED
44	5/15/54	R. H. MATTHEWS		REVISED
45	6/15/54	R. H. MATTHEWS		REVISED
46	7/15/54	R. H. MATTHEWS		REVISED
47	8/15/54	R. H. MATTHEWS		REVISED
48	9/15/54	R. H. MATTHEWS		REVISED
49	10/15/54	R. H. MATTHEWS		REVISED
50	11/15/54	R. H. MATTHEWS		REVISED
51	12/15/54	R. H. MATTHEWS		REVISED
52	1/15/55	R. H. MATTHEWS		REVISED
53	2/15/55	R. H. MATTHEWS		REVISED
54	3/15/55	R. H. MATTHEWS		REVISED
55	4/15/55	R. H. MATTHEWS		REVISED
56	5/15/55	R. H. MATTHEWS		REVISED
57	6/15/55	R. H. MATTHEWS		REVISED
58	7/15/55	R. H. MATTHEWS		REVISED
59	8/15/55	R. H. MATTHEWS		REVISED
60	9/15/55	R. H. MATTHEWS		REVISED
61	10/15/55	R. H. MATTHEWS		REVISED
62	11/15/55	R. H. MATTHEWS		REVISED
63	12/15/55	R. H. MATTHEWS		REVISED
64	1/15/56	R. H. MATTHEWS		REVISED
65	2/15/56	R. H. MATTHEWS		REVISED
66	3/15/56	R. H. MATTHEWS		REVISED
67	4/15/56	R. H. MATTHEWS		REVISED
68	5/15/56	R. H. MATTHEWS		REVISED
69	6/15/56	R. H. MATTHEWS		REVISED
70	7/15/56	R. H. MATTHEWS		REVISED
71	8/15/56	R. H. MATTHEWS		REVISED
72	9/15/56	R. H. MATTHEWS		REVISED
73	10/15/56	R. H. MATTHEWS		REVISED
74	11/15/56	R. H. MATTHEWS		REVISED
75	12/15/56	R. H. MATTHEWS		REVISED
76	1/15/57	R. H. MATTHEWS		REVISED
77	2/15/57	R. H. MATTHEWS		REVISED
78	3/15/57	R. H. MATTHEWS		REVISED
79	4/15/57	R. H. MATTHEWS		REVISED
80	5/15/57	R. H. MATTHEWS		REVISED
81	6/15/57	R. H. MATTHEWS		REVISED
82	7/15/57	R. H. MATTHEWS		REVISED
83	8/15/57	R. H. MATTHEWS		REVISED
84	9/15/57	R. H. MATTHEWS		REVISED
85	10/15/57	R. H. MATTHEWS		REVISED
86	11/15/57	R. H. MATTHEWS		REVISED
87	12/15/57	R. H. MATTHEWS		REVISED
88	1/15/58	R. H. MATTHEWS		REVISED
89	2/15/58	R. H. MATTHEWS		REVISED
90	3/15/58	R. H. MATTHEWS		REVISED
91	4/15/58	R. H. MATTHEWS		REVISED
92	5/15/58	R. H. MATTHEWS		REVISED
93	6/15/58	R. H. MATTHEWS		REVISED
94	7/15/58	R. H. MATTHEWS		REVISED
95	8/15/58	R. H. MATTHEWS		REVISED
96	9/15/58	R. H. MATTHEWS		REVISED
97	10/15/58	R. H. MATTHEWS		REVISED
98	11/15/58	R. H. MATTHEWS		REVISED
99	12/15/58	R. H. MATTHEWS		REVISED
100	1/15/59	R. H. MATTHEWS		REVISED

TYP. GRAVEL STOP-CHAMFER
FULL SIZE

R. H. MATTHEWS & ASSOCIATES
ARCHITECTS
1000 BROADWAY
NEW YORK 10, N.Y.



ARCHITECT R. H. MATTHEWS & ASSOCIATES 100 WEST 42ND STREET NEW YORK 36, N.Y.		ENGINEER J. H. HARRIS & ASSOCIATES 100 WEST 42ND STREET NEW YORK 36, N.Y.	
DATE 1954	PROJECT JEROME TOWERS, INC. 100 WEST 42ND STREET NEW YORK 36, N.Y.	NO. AD-5	SCALE AS SHOWN

